

**TA**

**CORRESPONDENCE**

**as of 7-7-2022**

**From:** [manitov@gmail.com](mailto:manitov@gmail.com)  
**To:** [reimagine@samtrans.com](mailto:reimagine@samtrans.com); [Board \(@smcta.com\)](mailto:Board (@smcta.com))  
**Subject:** RE: 292 Route Chnage  
**Date:** Sunday, July 3, 2022 4:00:05 PM  
**Attachments:** [image001.png](#)

You don't often get email from manitov@gmail.com. [Learn why this is important](#)

**ATTENTION:** This email came from an external sender. Do not open attachments or click on links from

Is this the loop that the 292 will be making? This is similar to the punitive loop the ECR had to do before to reach the Millbrae transit hub. I'm glad you decided to not do that years ago.

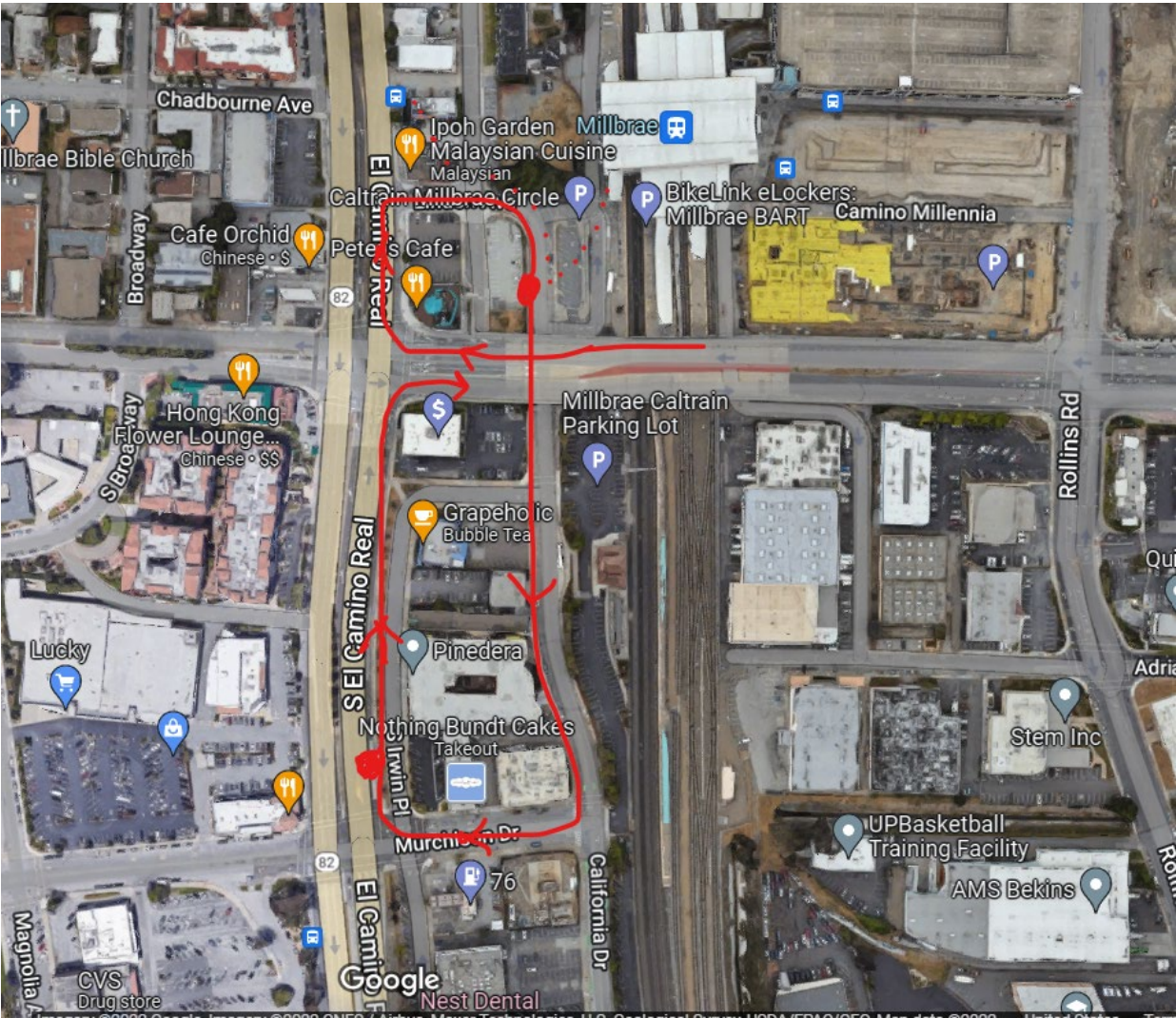
This is disappointing that the 292 is being sacrificed by having it suffer almost a 10-minute penalty by having to loop around the Bart station. I know it's being made to take on the collateral damage of the SFO line going away. There might be some winners in this change but the definite losers are:

1. Burlingame hotel workers coming from SB, SSF and DC
2. SFO workers coming from San Mateo
3. San Mateo to SB/SSF commuters
4. Tourists from Burlingame hotels needing to quickly go to SFO – used to be 10 mins, now doubled to 20 mins bec of detour
5. Bus operators having to suffer an additional 10 mins from their already two hour long end-end travel
6. SM and Burlingame residents coming home from SFO having to detour to Millbrae and double travel time
7. Consider that the 292 already does a ponderous loop around the airport serving 4 terminal stops. It's being asked to do too much.
8. This route will become so unreliable now having to be trapped in the peak hour congestion on Millbrae Ave and the on/off ramps.
9. Pedestrians at ECR/Millbrae who in addition of having to look out for their safety crossing crosswalks and dangerous corners there now also have to contend with a bus operator having to meet a schedule. At a point in their day where they've already driven an hour but are still less than halfway thru their route.

I wish you would reconsider. The people in 1-4 are going to unpleasantly surprised when this kicks in. These are the people who outreach cannot adequately reach and really are the most impacted. And will be the ones who suffer the most, in particular 1-2 who are typically unable to provide feedback on such an impactful plan until it's too late.

If it's possible to delay implementation of this, I would highly encourage you to do so. Otherwise this will slowly kill off the reliability and operations of the 292 and severely punish its constituency.

Manito



-----Original Message-----  
From: Manito Velasco <manitov@gmail.com>  
Sent: Saturday, July 2, 2022 1:25 PM  
To: reimagine@samtrans.com  
Subject: 292 Route Chngae

Hi there,

I just learned about this service change happening in August.

Is it possible to get a map of the new route and the new stops? I can't find the information in the website.

Thanks,  
Manito.