



101/92 Mobility Hub and Smart Corridor Concept Plan

PROGRESS REPORT








What is the 101/92 Mobility Hub and Smart Corridor Concept Plan?



The 101/92 Mobility Hub and Smart Corridor Concept Plan will establish the vision for corridor improvements along a 1.3 mile stretch of Fashion Island Boulevard and 19th Avenue and a new Mobility Hub.

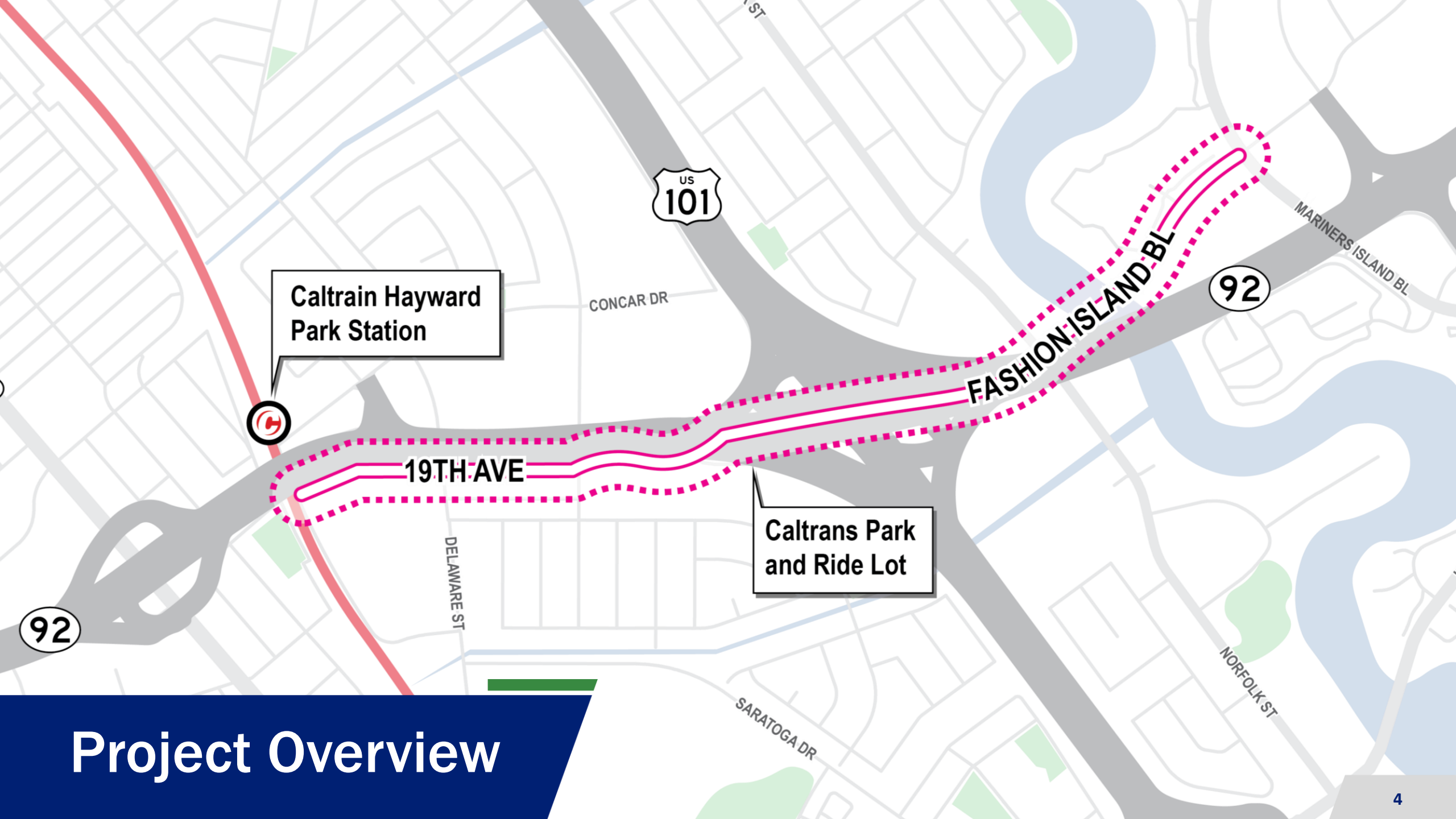


What is the 101/92 Mobility Hub and Smart Corridor Concept Plan?



The Concept Plan is the first major non-highway initiative being led by the TA through its local assistance services.

The City of San Mateo is the project sponsor, the TA is the implementing agency, and SamTrans is a project partner. The TA is also leading funding strategy for remaining project phases.



Project Overview

Mobility Hub

- Serve future SamTrans Express Bus
- Serve current private sector and future public shuttles
- Add opportunities for first/last mile services

Smart Corridor

- Class IV Separated Bikeway
- Smart Technology
- Pedestrian and Intersection Improvements

Priority Features

Mobility Hub

- Real-time transit arrival information
- Bike parking
- Passenger pick-up/drop-off areas
- Electric charging
- Micromobility access

Smart Corridor

- Bus shelters with real-time arrival information
- Trash cans with smart sensors
- Public wi-fi
- Public benches with USB charging

Optional Features



Concept Plan Components



1

Existing Conditions Report

2

**Mobility Hub and Smart
Corridor Toolkit**

3

**Community/Stakeholder
Engagement**

4

**Conceptual Design
Alternatives**

5

Final Concept Plan

Tasks Completed

- Existing Conditions Report
- Mobility Hub and Smart Corridor Toolkit
- 1st Phase Community/Stakeholder Engagement

Tasks in Progress

- Survey Live Until September 15
- Conceptual Design Alternatives

Tasks Starting Soon

- 2nd Phase of Community/Stakeholder Engagement – February 2024

Progress Update





1st Phase Engagement Activity Summary

- 2 Pop-Up Events/over 60 community member interactions
- 1 Infrastructure Ride/Walk Audit
- 1 HOA Presentation
- Business Stakeholder, Community Stakeholder and Project Advisory Group Meetings
- Online Survey



What We've Heard So Far...

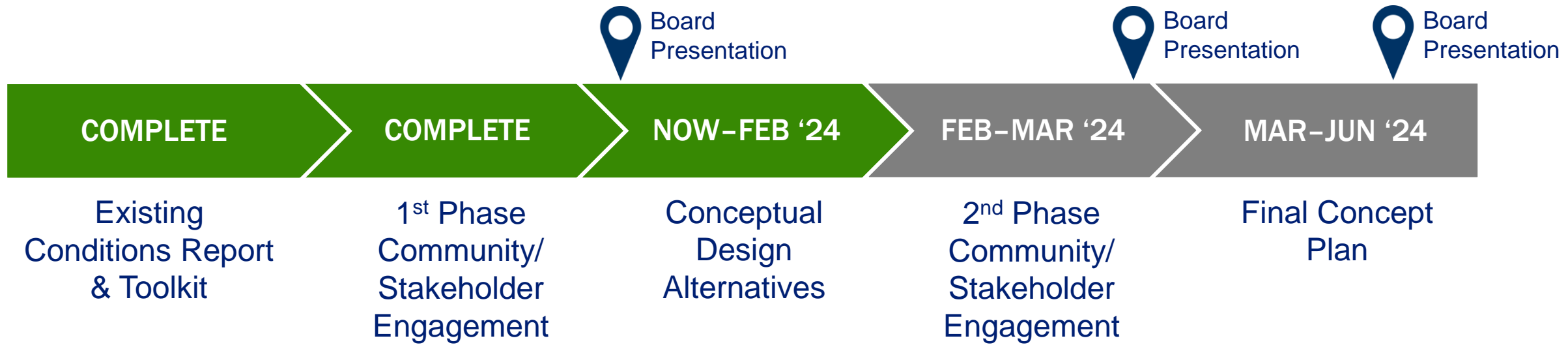
Support

- **Bike lanes with protection**
- **Better access to Caltrain Hayward Park Station**
- **Improvements to make it easier to walk along the corridor**
- **General support for Mobility Hub**
- **Connections to nearby destinations**

Challenges

- **Feels stressful riding bikes or walking near/underneath freeway**
- **Crime, unhoused**
- **Too much traffic around the area**
- **Nearby school informally uses park and ride as a pick-up/drop-off area**
- **Preservation of parking**

What We've Heard So Far...



Schedule

Thank You

For any questions, please contact:

Martin Reyes
Principal Transportation Planner
ReyesM@samtrans.com

Amy C. Linehan
Government and Community Affairs Officer
LinehanA@samtrans.com

For more information, please visit:

www.smcta.com/10192mhsc

