



Frequently Asked Questions

NORTH COUNTY MULTIMODAL STRATEGY

What is the 101 Corridor Connect North County Multimodal Strategy?

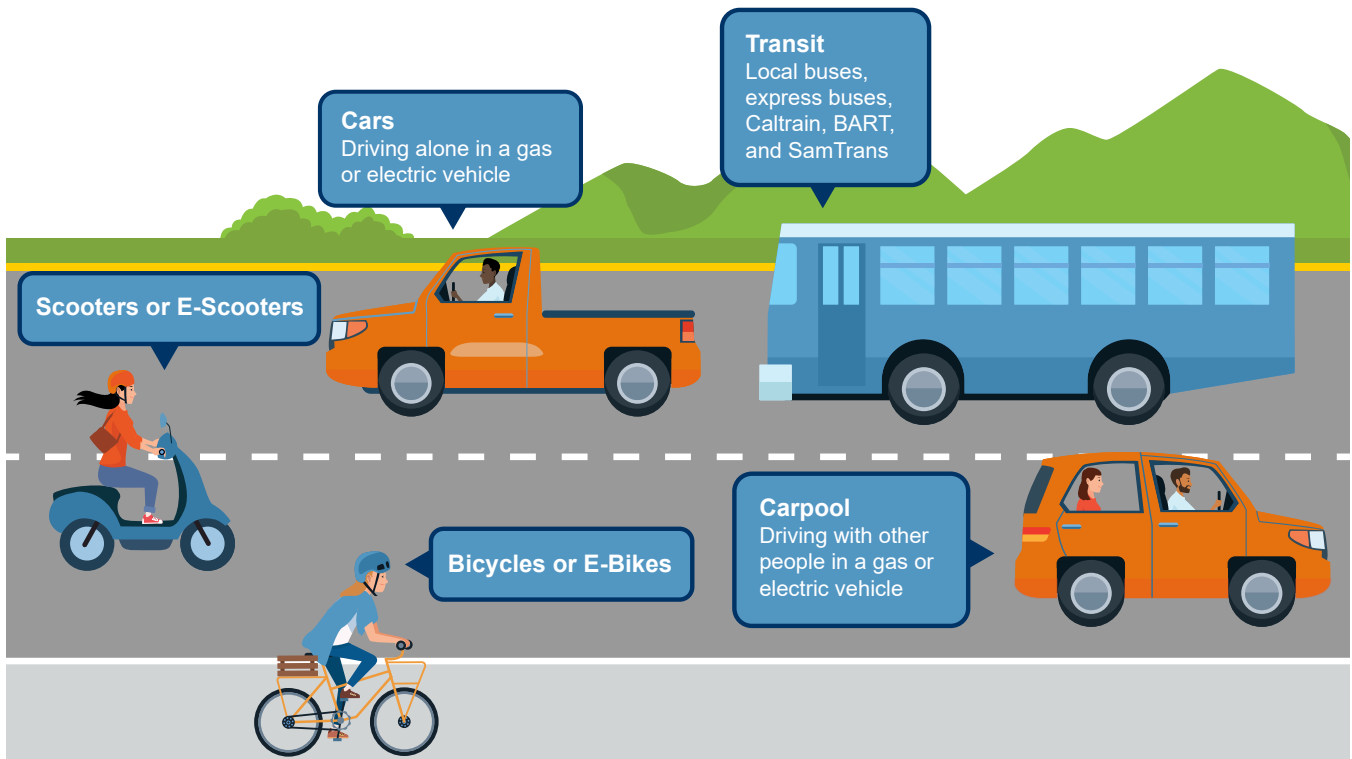
The North County Multimodal Strategy is the first initiative under the 101 Corridor Connect program. It is a plan that will identify improvements along the northern portion of the Highway 101 corridor that are needed but currently underfunded and recommend priorities for project delivery.

What does “multimodal” mean?

A *mode* of transportation is a term used to distinguish different ways of moving people or goods. Common modes of transportation include driving, walking, biking and taking transit. A multimodal transportation system offers people the opportunity to travel using whichever mode of transportation best suits their needs

What are the goals of the North County Multimodal Strategy?

The TA wants the 101 corridor to be an interconnected corridor that serves the needs of all travelers in San Mateo County, no matter how they choose to travel. Through this project, the TA aims to relieve traffic congestion, improve travel conditions, and develop a strategy for long-term investment into transportation that is aligned with community priorities. The goal is to use public feedback and a project inventory to create a clear list of priority projects for the North County.



Where is the project located? What is the study area?

The North County Multimodal Strategy is located along the 101 corridor in northern San Mateo County, including the cities of Millbrae, San Bruno, South San Francisco, and Brisbane, as well as adjacent unincorporated communities. The study area includes Highway 101 and areas within one mile of the highway.

When will the North County Multimodal Strategy be completed?

The North County Multimodal Strategy is anticipated to be completed in Spring 2024.

Where is the North County Corridor?

The North County Corridor includes the cities of Brisbane, South San Francisco, San Bruno, and Millbrae. The study area includes communities within one mile of Highway 101 inclusive of unincorporated areas. See [a map of the North County Corridor here](#).

Who can provide input into this plan?

If you drive on Highway 101 or take public transit, walk, bike or get around using other types of transportation within 1-mile of the Highway 101 we want your feedback on what can be improved. Your feedback will be critical for determining priority projects and improving transportation access in the North County.

The project team is currently seeking input from people who live, work and travel in the cities of Brisbane, South San Francisco, Millbrae, and San Bruno or in nearby unincorporated communities.

How can I provide feedback?

The TA will be conducting an online survey [here](#), hosting a virtual community meeting, and setting up pop-up booths throughout the region. Check out our [project website here](#) for more information or join the project mailing list [here](#) to get updated details on how and where to attend in-person and online events. Feedback can also be provided by contacting San Mateo County Transit District Customer Service at 1-800-660-4287 or emailing info@smcta.com.

How will my input be used?

By participating in our survey, community meeting, or talking to us at a pop up you will have the opportunity to give feedback on what impacts you most and what would make it easier for you to get around the 101 Corridor. TA staff will use community feedback to develop priorities for the types of projects that should be developed. There are more projects than funds available, and your input will help the TA make sure funding is going where it is needed most.

How will projects be selected to be included in the strategy?

As part of preparation of the North County Multimodal Strategy, evaluation criteria will be developed to help decide which transportation improvements should be prioritized for delivery. In addition to public feedback, evaluation criteria may include factors such as cost, safety, congestion relief potential, and equity.

What happens after the strategy is complete?

Once the strategy is complete, the TA will begin work to deliver projects identified in the North County Multimodal Strategy.