



# North County Multimodal Strategy

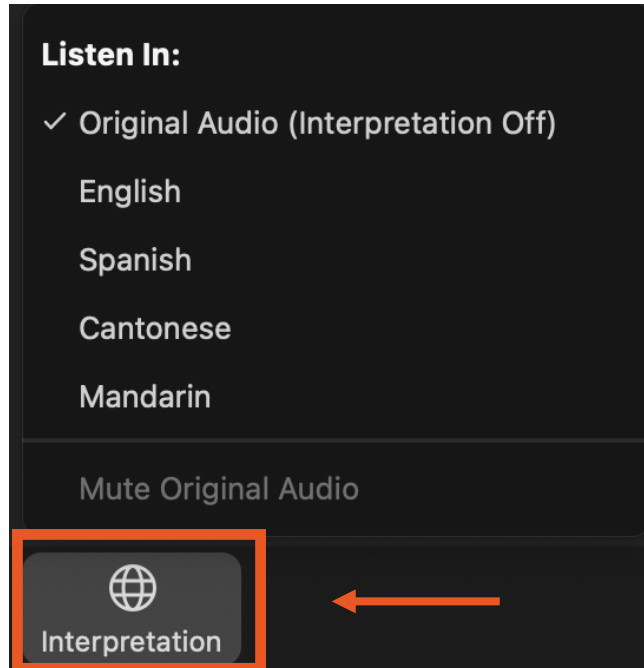
Community Meeting

---

November 7, 2023



# Interpretation



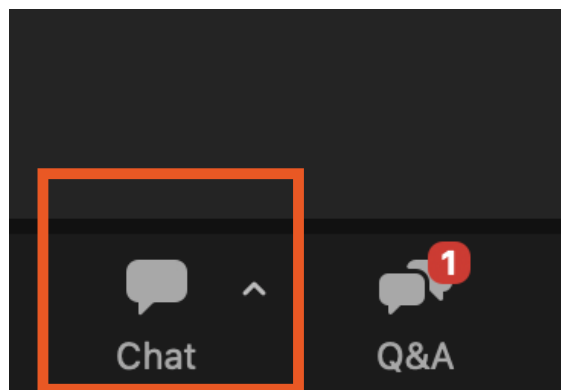
Live interpretation of this meeting is available in Spanish, Cantonese, and Mandarin.

1. In your meeting/webinar controls, click Interpretation.
2. Select the language that you would like to hear: **English**

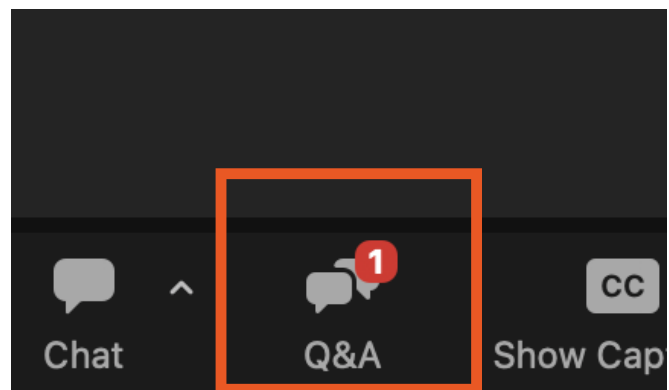


Translated versions of the slides are online at [smcta.com/NorthCountyMultimodal](https://smcta.com/NorthCountyMultimodal).

# Housekeeping



Share comments with attendees and presenters in the chat.



Use the Q&A feature to submit questions at any time.



We will answer questions after the presentation.

*\*This meeting will be recorded and provided to the TA to assist with meeting notes.*

# Agenda

1. Introduction
2. What is 101 Corridor Connect?
3. Multimodal Strategies
4. North County Multimodal Strategy
5. Questions and Answers
6. We Need Your Feedback!
7. Next Steps

## Poll Question

### Where do you live?

- a. Brisbane
- b. Millbrae
- c. San Bruno
- d. South San Francisco
- e. Other



# Introduction

## What is 101 Corridor Connect?

A collaborative program to identify, prioritize and deliver a package of congestion management projects along US 101 in San Mateo County.

Looks beyond just highway infrastructure and considers the mobility needs of the corridor as a whole.

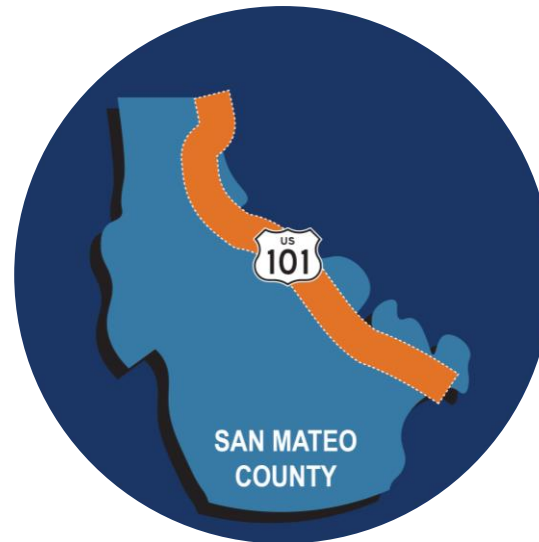
Program partners - C/CAG, Caltrans, cities, transit agencies, and San Mateo County.

# What is 101 Corridor Connect?

Using Caltrans' US 101 South Comprehensive Multimodal Corridor Plan as its foundation, 101 Corridor Connect will identify, prioritize and deliver locally-supported projects along US 101.



**US 101 South  
Comprehensive  
Multimodal Corridor Plan**



**Multimodal strategies  
and other future initiatives**



# Goals of 101 Corridor Connect



## Safe

Enhance safety for users of the transportation network



## Connected

Connect people to the places they need to go



## Sustainable

Improve air quality and reduce emissions



## Inclusive

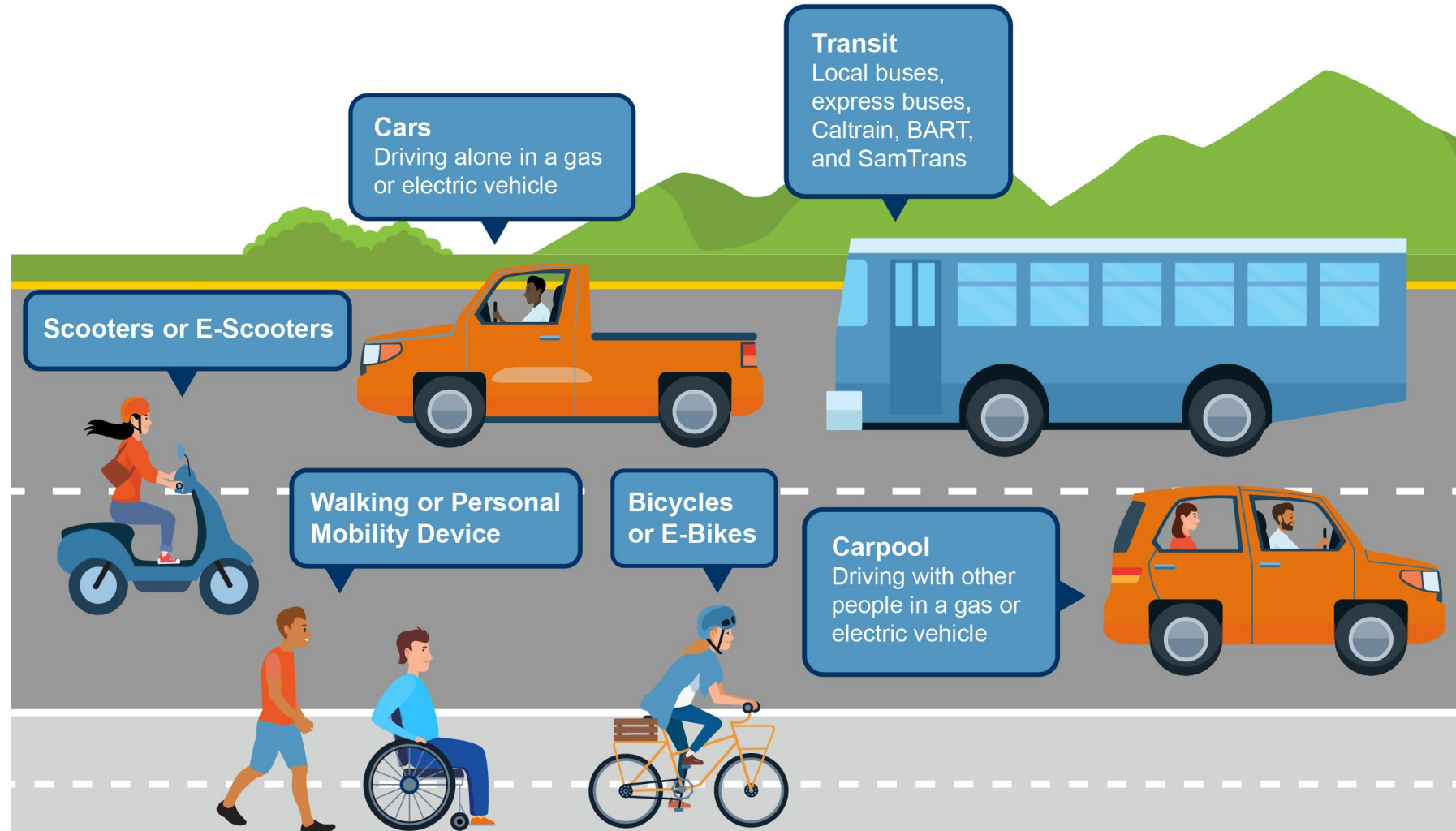
Increase access for underserved communities



# Multimodal Strategies

North County, Mid County, and South County

# What does “Multimodal” Mean?



## Poll Question

**How do you usually travel throughout the 101 corridor?**

- a. Car (driving alone)
- b. Carpooling
- c. Walking or rolling
- d. Biking
- e. Transit (bus, shuttle, train, ferry, etc.)
- f. Other

## **What is a Multimodal Strategy?**

The Multimodal Strategies are planning documents that will identify and prioritize needed projects in San Mateo County.

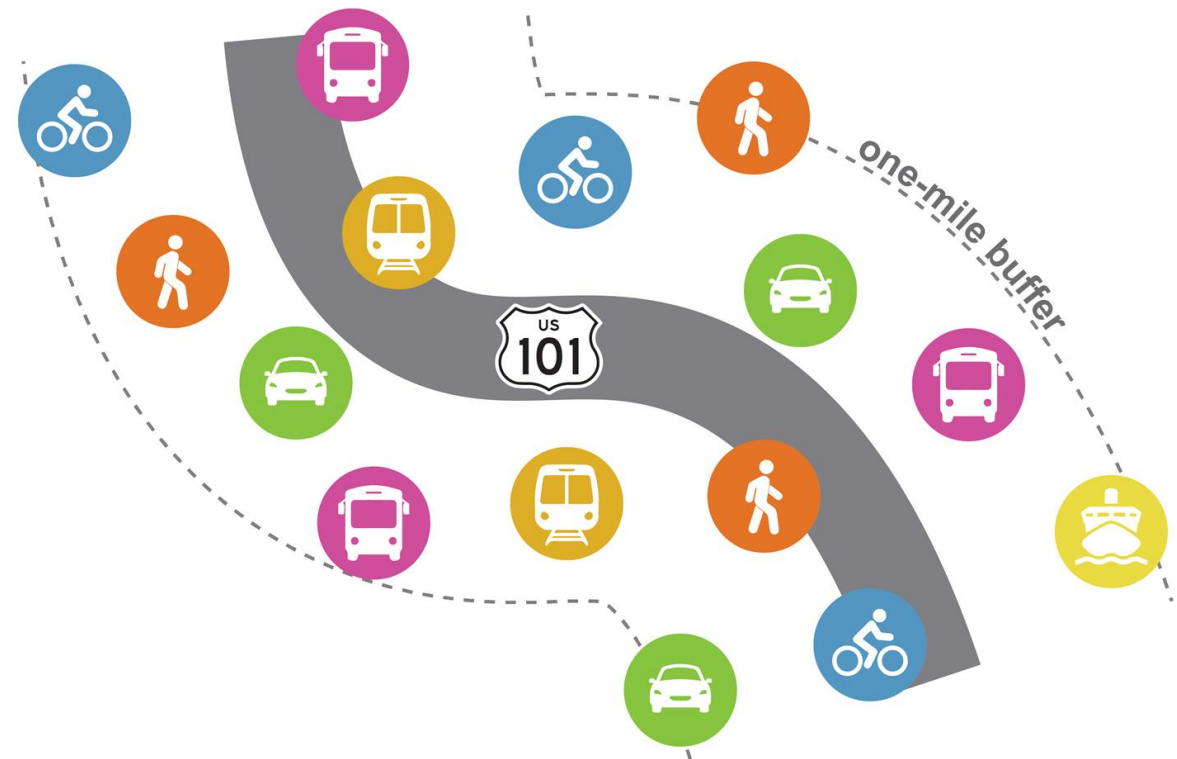
Projects will include highway, active transportation, transit, other types of improvements.

## Getting Beyond Just the Highway

Projects that will be considered should improve mobility, safety, economic development, sustainability and equity for all users in the 101 corridor and can be inclusive of all modes of transportation.



# Multimodal Strategy Development



## Step 1: Identify and Evaluate

# Multimodal Strategy Development



## Step 2: Prioritize and Deliver



# Multimodal Strategy Components

- 1 Existing Conditions Report
- 2 Project Inventory
- 3 Community/Stakeholder Engagement
- 4 Prioritization and Implementation Plan

## 1 North County

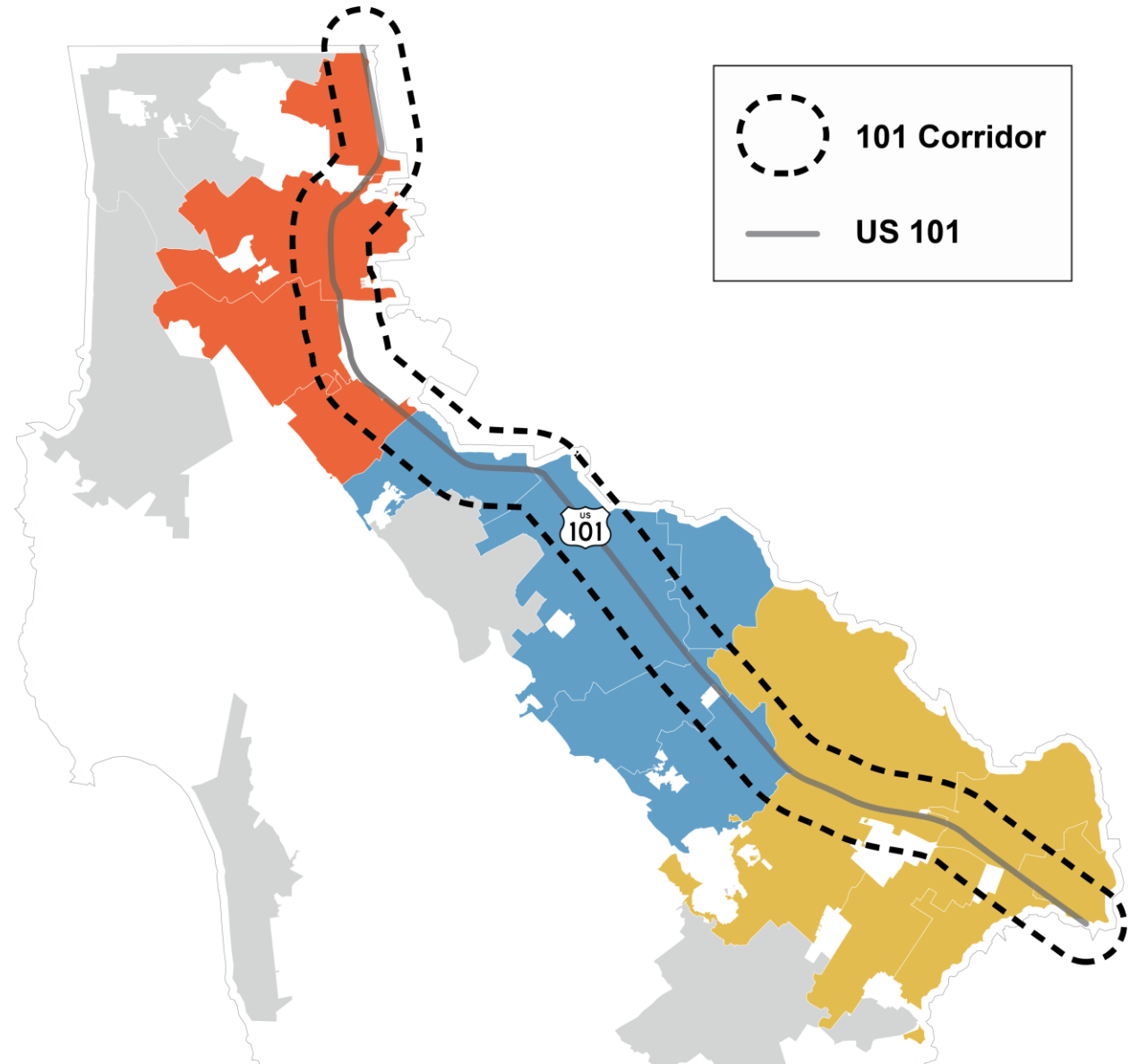
Brisbane, Millbrae, San Bruno, South San Francisco  
*Now – Winter 2024*

## 2 Mid County

Belmont, Burlingame, Foster City, San Carlos, San Mateo  
*Begins Spring 2024*

## 3 South County

Atherton, East Palo Alto, Menlo Park, Redwood City  
*Begins in 2025*



# North County Multimodal Strategy



# Project Study Area

## North County Corridor

Includes the cities of Brisbane, Millbrae, San Bruno, and South San Francisco



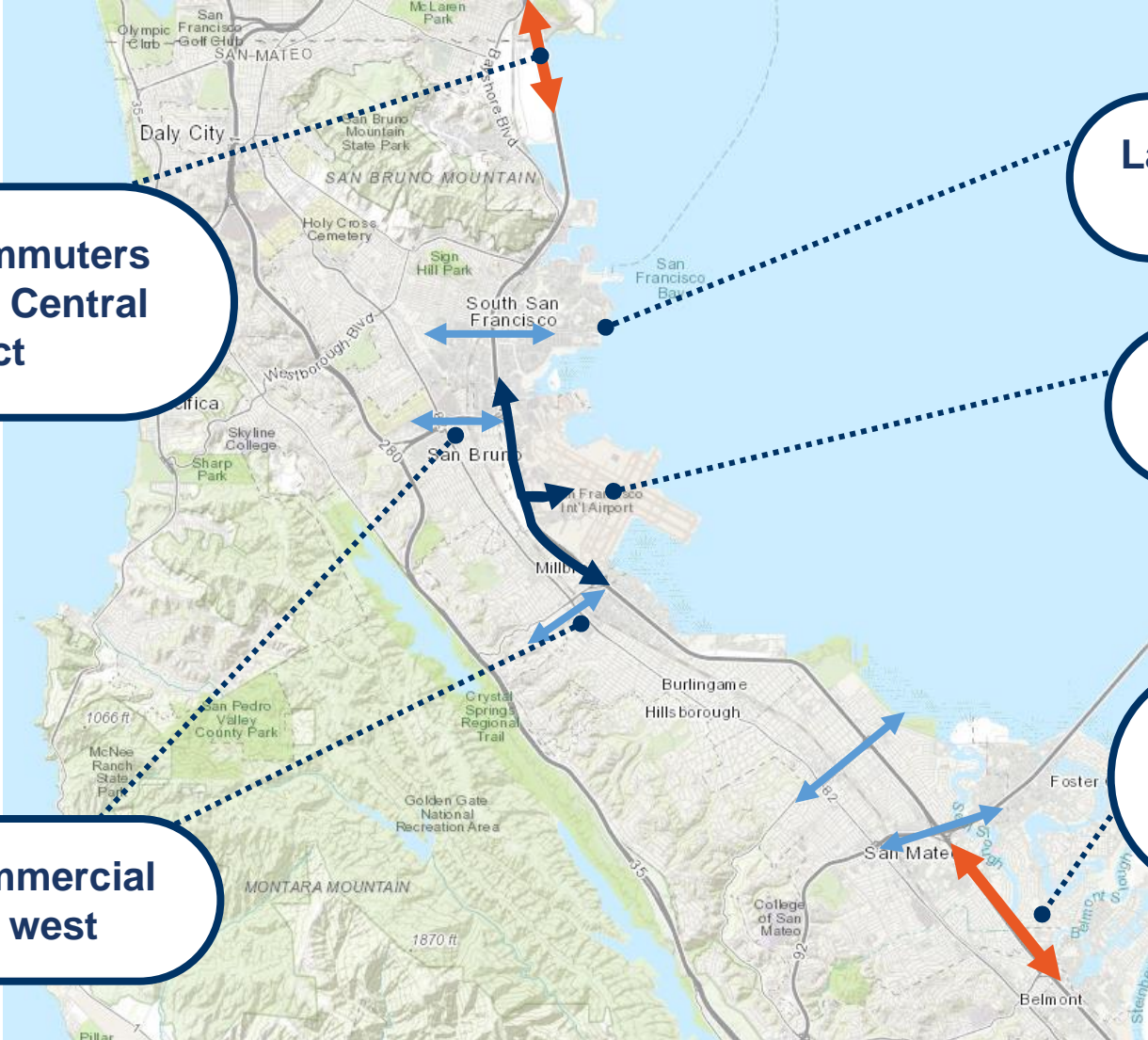
# North County Multimodal Strategy Timeline





# Existing Conditions

# Background: Travel Patterns



**San Mateo County commuters to/from San Francisco Central Business District**

**Large office and biotechnology employment sites**

**Travel to/from the San Francisco Airport**

**Residential and Commercial Retail use on the west**

**San Mateo County commuters to/from Santa Clara county**



# Existing Conditions

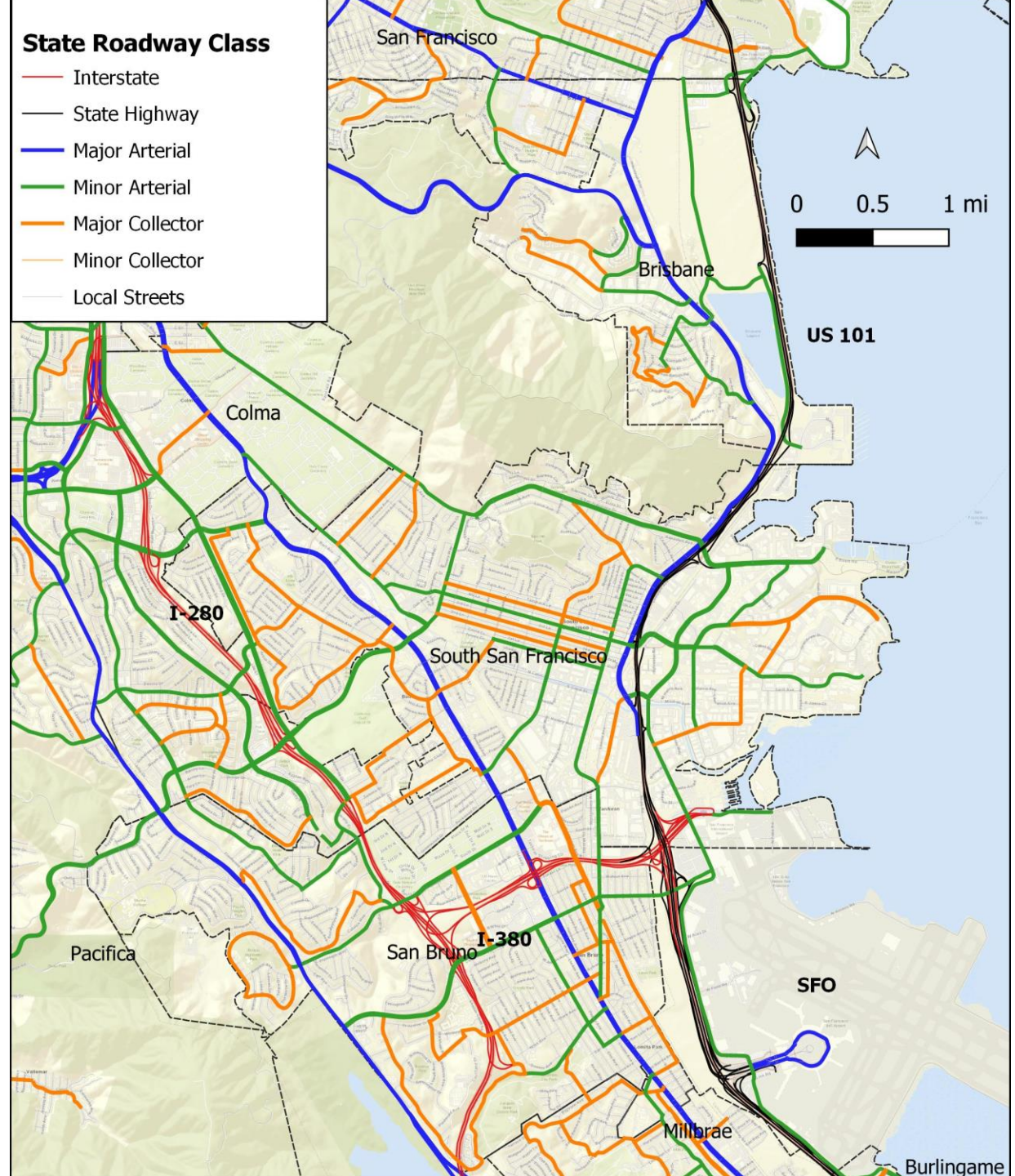
1

## Roadway Network

Recent addition of managed/carpool lanes south of I-380 to Santa Clara County

Peak hour bottlenecks

- Between Grand Ave and Airport Blvd in the AM and northbound
- Sierra Point Pkwy on-ramp southbound in the PM





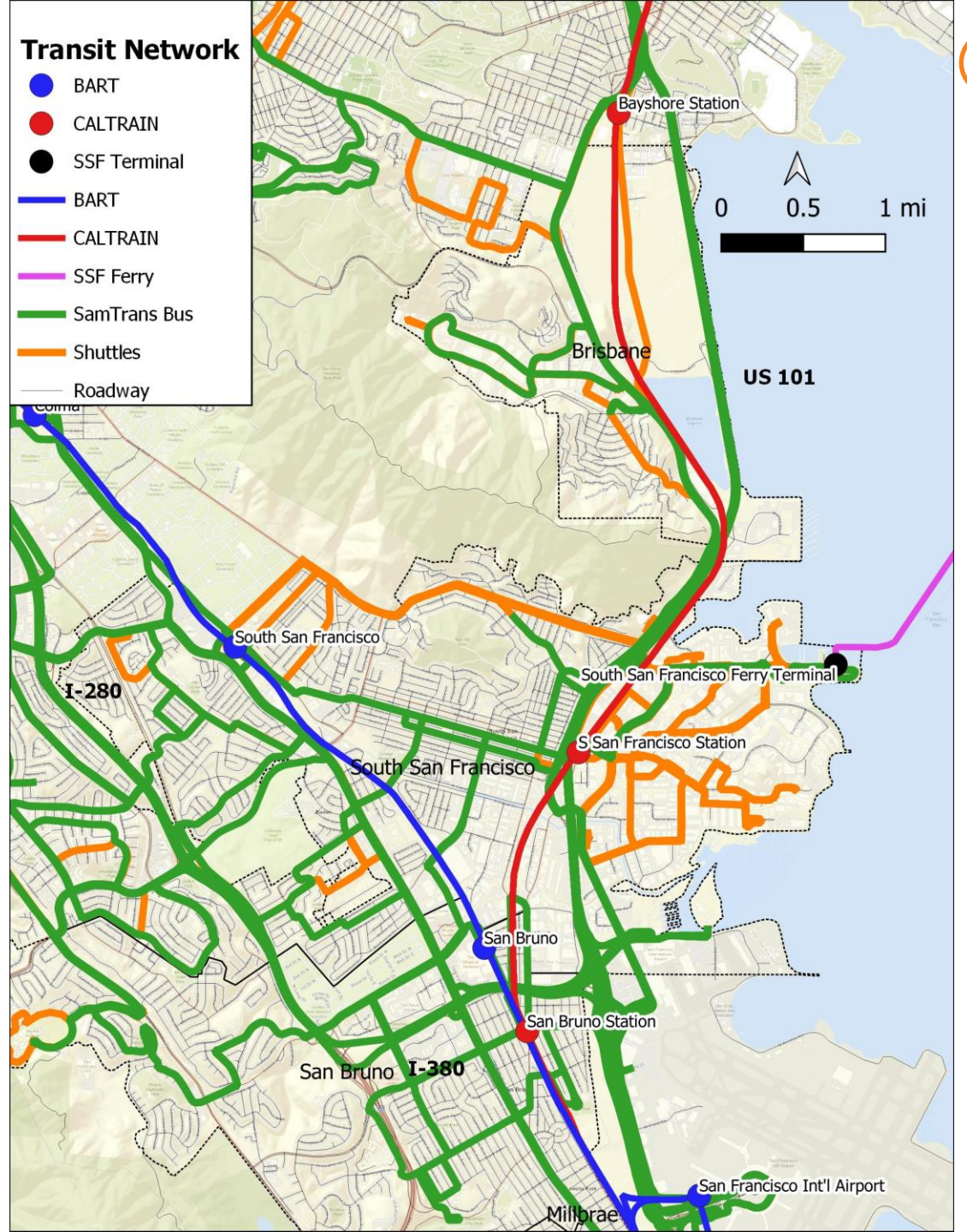
# Existing Conditions

2

## Transit Services

Transit operators in the corridor include:

- Caltrain (Millbrae, San Bruno and South San Francisco stations)
- BART (San Bruno, Millbrae and SFO stations)
- South San Francisco – Oakland Ferry service to and from the East Bay
- SamTrans local and intercity buses
- South City Shuttle





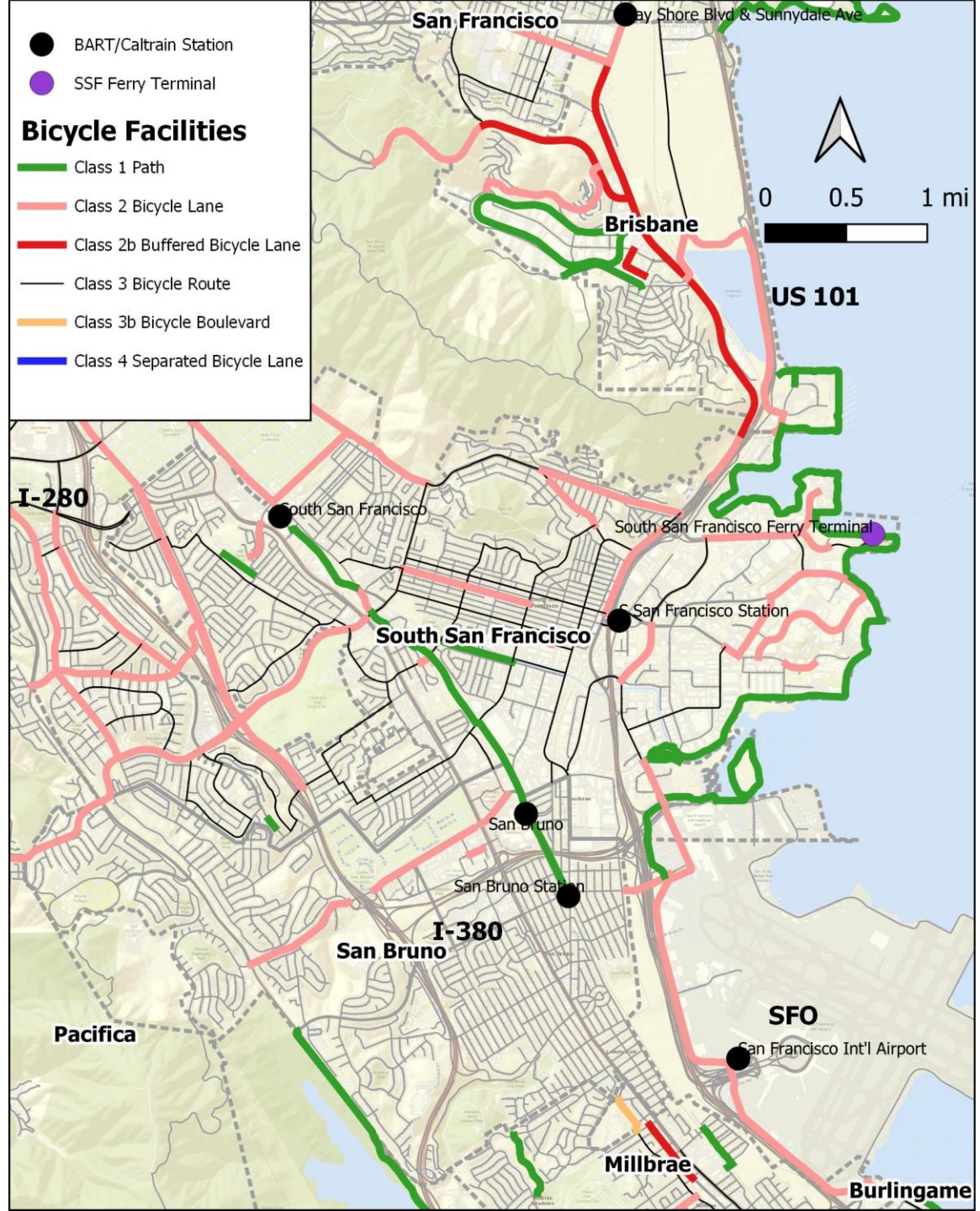
# Existing Conditions

3

## Bicycle Infrastructure

Concerns include:

- Large segment gaps between paths and lanes
- Lack of 'Low Stress' bicycle facilities in the corridor
- US 101 is a major barrier with a lack of bicycle overcrossings along the corridor





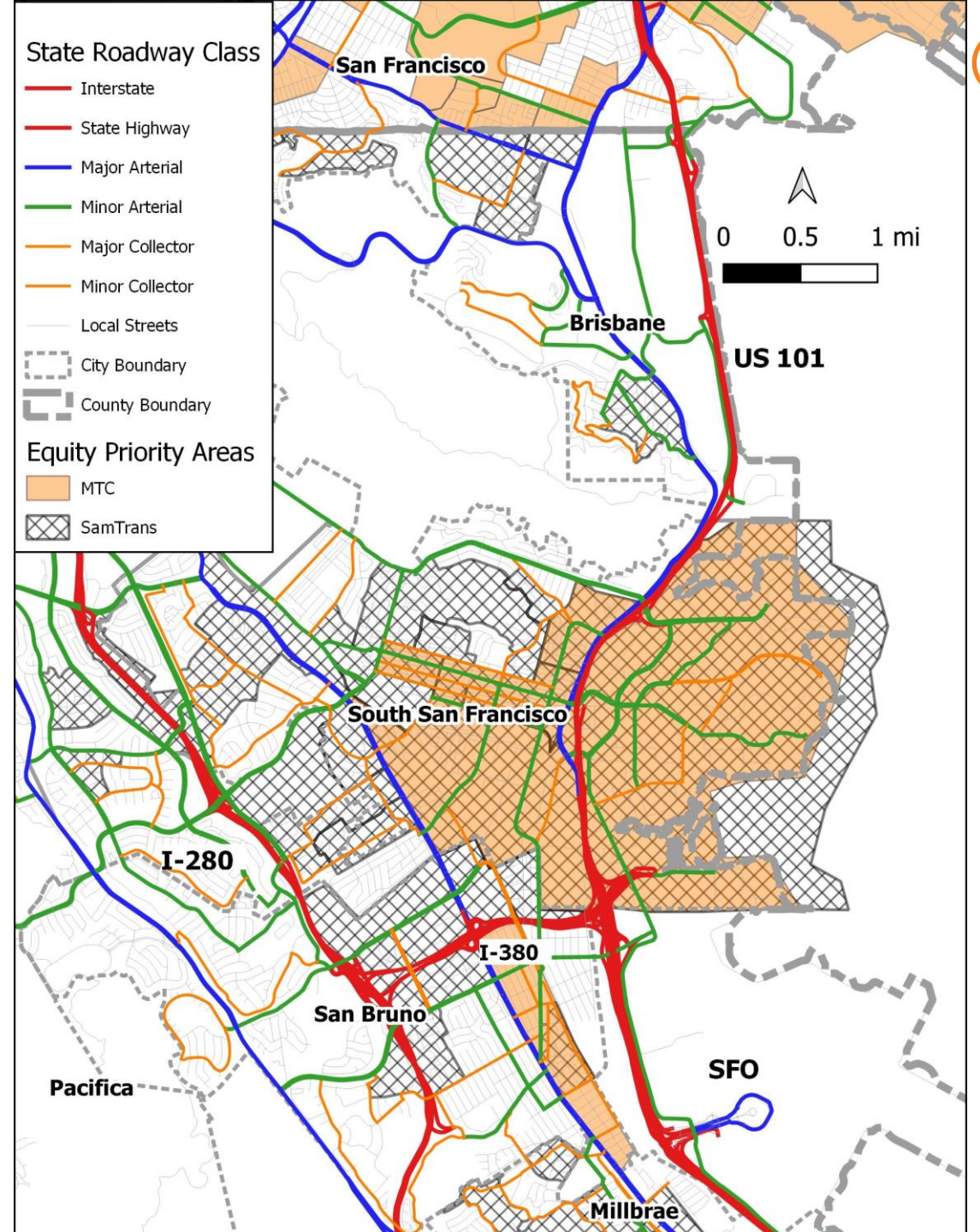
# Existing Conditions

4

## Equity Priority Communities

Equity Priority Areas/Communities include significant concentrations of underserved populations

- Low-income households
- Large proportion of minority populations
- Other demographic factors including poverty, disability status, senior populations and non-English Language proficient households



# Demographics and other considerations

- Transit Ridership Trends in the Corridor – Average Monthly Boardings
- Share of Commuter Trips by Mode by Jurisdiction
- Population and Labor Statistics by Jurisdiction
- Ethnicity and Race by Jurisdiction

Questions?





We Need Your Input!

# We Need Your Input!

- 1 What currently works best about transportation along the US 101 corridor?**
- 2 What are your top transportation concerns along the US 101 corridor?**
- 3 What would improve your travel experience along the US 101 corridor?**

# We Need Your Input!

- 1 What currently works best about transportation along the US 101 corridor?**
- 2 What are your top transportation concerns along the US 101 corridor?
- 3 What would improve your travel experience along the US 101 corridor?



# We Need Your Input!

- 1 What currently works best about transportation along the US 101 corridor?
- 2 What are your top transportation concerns along the US 101 corridor?**
- 3 What would improve your travel experience along the US 101 corridor?

# We Need Your Input!

- 1 What currently works best about transportation along the US 101 corridor?
- 2 What are your top transportation concerns along the US 101 corridor?
- 3 What would improve your travel experience along the US 101 corridor?**

# Take the Full Survey



## FILL OUT OUR ONLINE SURVEY



Tell us how we can improve  
transportation along the 101 corridor.

The [survey](https://www.surveymonkey.com/c/101CC-North) is open until November 17, 2023  
<https://www.surveymonkey.com/c/101CC-North>

Take the  
Full Survey



# Thank You For Participating!

For any questions, please contact:

**Martin Reyes**

Principal Transportation Planner  
ReyesM@samtrans.com

**Amy C. Linehan**

Government and Community Affairs Officer  
LinehanA@samtrans.com

[smcta.com/101CC](https://smcta.com/101CC)  
[smcta.com/NorthCountyMultimodal](https://smcta.com/NorthCountyMultimodal)



MOVING THE PENINSULA FORWARD