

# *Regional Transit Connections Plan*

Progress Update



**Board of Directors**  
**February 1, 2024**

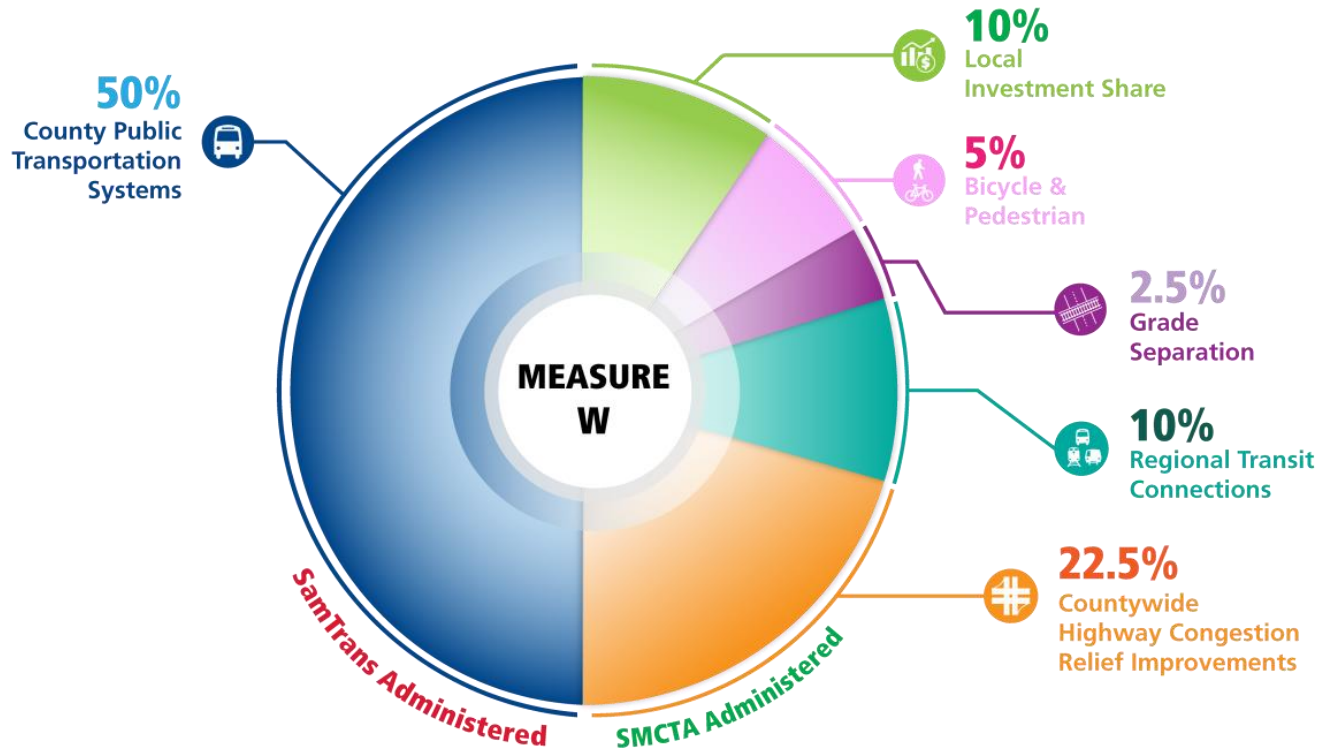
# AGENDA

---

- 1. Background**
- 2. RTC Program Overview**
- 3. RTC Plan Overview**
- 4. Existing Conditions Summary**
- 5. Community & Stakeholder Engagement**
- 6. Schedule & Next Steps**
- 7. Questions and Wrap Up**



# BACKGROUND: MEASURE W



Measure W is a half-cent sales tax measure running from 2019 to 2038

## Created a new TA Program Category:

- 10% of total Measure W revenue goes toward the new **Regional Transit Connections (RTC)** program category (approx. \$9 million annually)
- TA Strategic Plan 2020-2024 called for an RTC Plan & Capital Improvement Program to guide funding decisions
- Board approved allocation of \$450k for preparation of RTC Plan in March 2023



# RTC PROGRAM OVERVIEW

- On a typical weekday, over 700k trips originating in San Mateo County end in either Alameda, San Francisco or Santa Clara Counties
- Invest in infrastructure and services designed to improve transit connectivity between counties
- Encourage drivers to choose transit and help improve travel to and from San Mateo County, while also helping the county reach its climate goals



# RTC PROGRAM OVERVIEW

---

- Program will fund regional transit improvements such as rail, ferry or express bus projects
- Operations and capital projects are eligible

## Examples of Eligible Projects



**Rider Experience and Station Access Improvements**



**New Ferry Terminals and Vessels**



**Enhanced Express Bus Service**

# RTC PLAN OVERVIEW

---

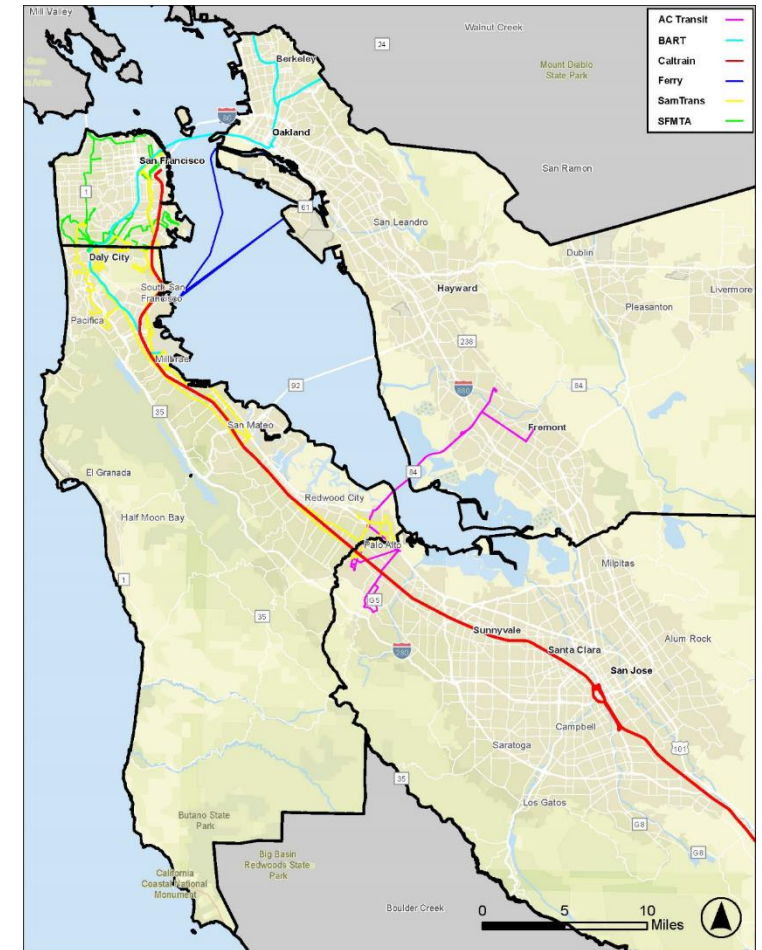
## RTC Plan Components



# EXISTING CONDITIONS SUMMARY

Existing regional transit network comprises intercounty transit services provided by:

- Alameda-Contra Costa Transit District (AC Transit)
- Bay Area Rapid Transit (BART)
- Caltrain
- SamTrans
- San Francisco Bay Ferry
- San Francisco Municipal Transportation Agency (SFMTA)

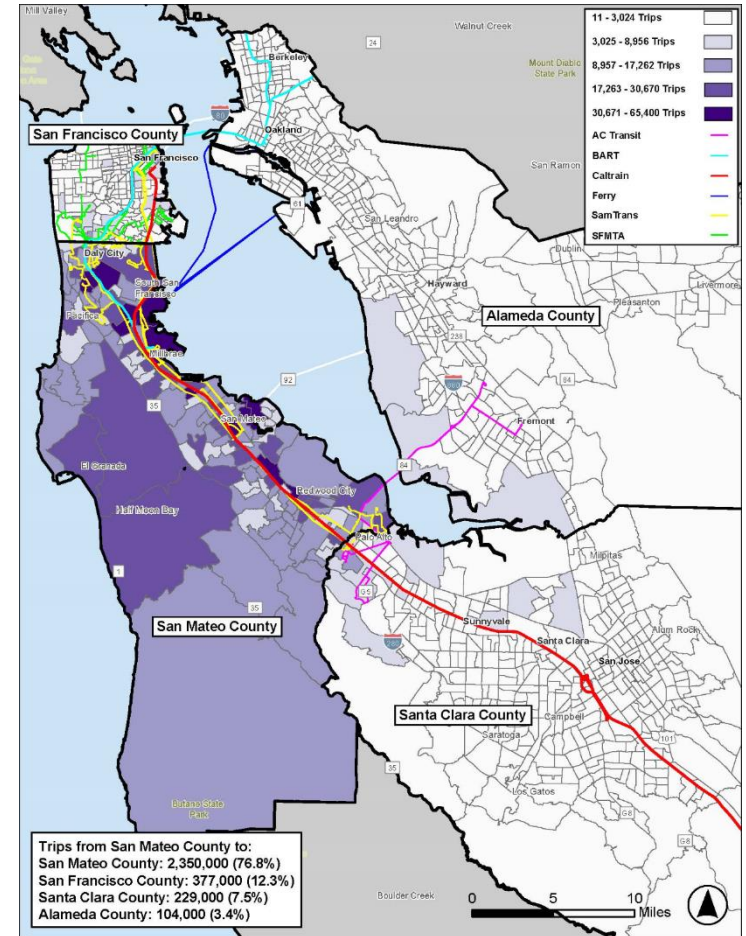


# EXISTING CONDITIONS SUMMARY

## Key Findings for Trips Originating in San Mateo

3.06 million trips begin in San Mateo County each day

- 76.8% (2.35 million) end in San Mateo
- 3.4% (104k) end in Alameda
- 12.3% (377k) end in San Francisco
- 7.5% (229k) end in Santa Clara

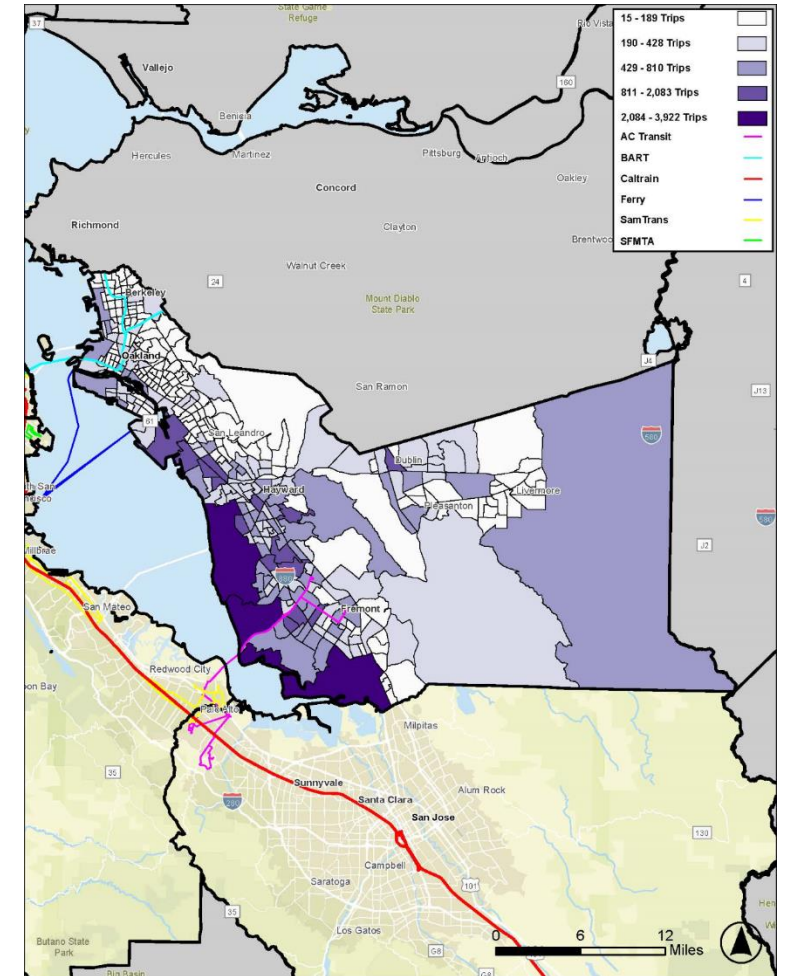




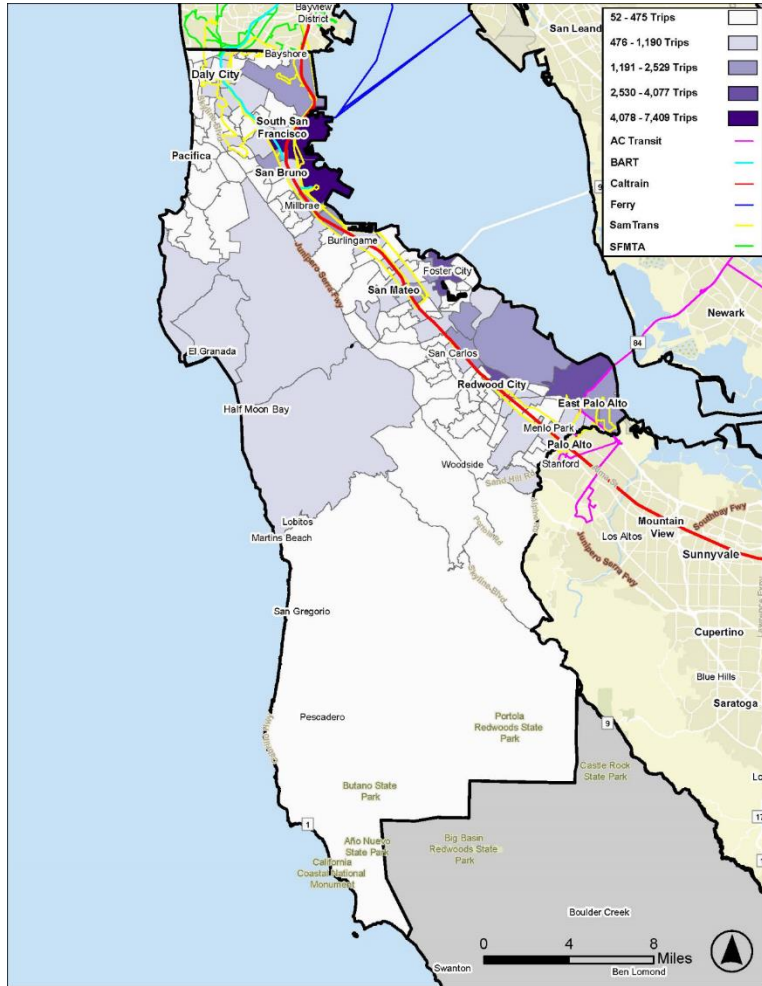
# EXISTING CONDITIONS SUMMARY

## Key Findings for Trips Originating in San Mateo

- Trip starting points are concentrated in Foster City, Millbrae, San Bruno, South San Francisco, Redwood City, and SFO
- Key destinations include Fremont, Hayward, Newark, Downtown SF, Stonestown (SF), Downtown Palo Alto, and Stanford University



# EXISTING CONDITIONS SUMMARY



## Key Destinations for Trips Originating Outside San Mateo County

- South San Francisco (Oyster Point), San Bruno (Shops at Tanforan), Millbrae, SFO, East Palo Alto, Redwood City, Foster City

# COMMUNITY & STAKEHOLDER ENGAGEMENT



## Engagement Activities

- Virtual Community Meeting
- Pop-up Events (up to 10)
- Small Group Meetings
  - Labor groups, community organizations, employers
- Online Survey
- Webpage
- Technical Working Group (eligible transit agencies)

# SCHEDULE AND NEXT STEPS

---

## Schedule

TASK	DATE
Existing Conditions Analysis	Draft Completed
Community and Stakeholder Engagement	February – April 2024
Capital Improvement Program	April – May 2024
Program Framework and RTC Plan Development	May – September 2024

## Next Steps

- Engagement kick-off in February 2024
- Next Board update in Summer 2024



# QUESTIONS AND WRAP-UP

---



## Project Contacts

Patrick Gilster

Director, Planning and Fund Management

[gilsterp@samtrans.com](mailto:gilsterp@samtrans.com)

Amy Linehan

Government and Community Affairs Officer

[linehana@samtrans.com](mailto:linehana@samtrans.com)

