

SM 101 EXPRESS LANES PROJECT



Transportation Authority Board March 7, 2019 – Agenda Item#12 (a)



- Project Updates
- Construction Activities
- Change Management Controls
- Public Outreach



- Officially rebranded San Mateo US 101 Express Lanes Project for the public
- To be constructed under 2 contracts
 - HOV to Express Lane Conversion
 - Express Lane Addition

SM 101 EXPRESS LANES PROJECT

Project Updates



HOV to Express Lane Conversion

Limits: Santa Clara County Line – Whipple I/C (6 miles)

Scope: Conversion of existing HOV lanes to express lanes through the installation of tolling equipment

Schedule: March 2019 – November 2019

Construction Capital \$61.3 million

Construction Support \$7 million

Express Lane Addition

Limits: Whipple I/C – I-380 (16 miles)

Scope: Construction of new express lanes and the installation of tolling equipment

Schedule: October 2019 – November 2021

Construction Capital \$297 (*Engineers Estimate*)

Construction Support \$34 million

Included in the project budget is a \$38 million contingency which will be the primary source of funding for contingencies

SM 101 EXPRESS LANES PROJECT

Project Updates



SM 101 EXPRESS LANES PROJECT HOV TO EXPRESS LANE CONVERSION



Cities

-Palo Alto

-East Palo Alto

-Menlo Park

-Redwood City

Limits: Construction from the San Mateo/Santa Clara County Line to Whipple Ave

Schedule: Construction March 2019

March – May 2019: Work limited to US 101 median and shoulders June – November communication & power work

Scope: Overhead signs, barrier replacement, safety lighting, restriping

Connect to existing PG&E and telecommunications junctions on city streets

Impacts: Nighttime lane closures, temporary ramp closures, temporary city street closures

SM 101 EXPRESS LANES PROJECT EXPRESS LANE ADDITION



Cities

-Redwood
City

-San Carlos

-Belmont

-San Mateo

-Burlingame

-Millbrae

-San Bruno

-South San
Francisco

Limits: Convert existing auxiliary lanes to through lanes and add back auxiliary lanes where necessary from Whipple Ave to I-380

Schedule: Construction begins October 2019

Scope: New pavement, overhead signs, barrier replacement, safety lighting, restriping

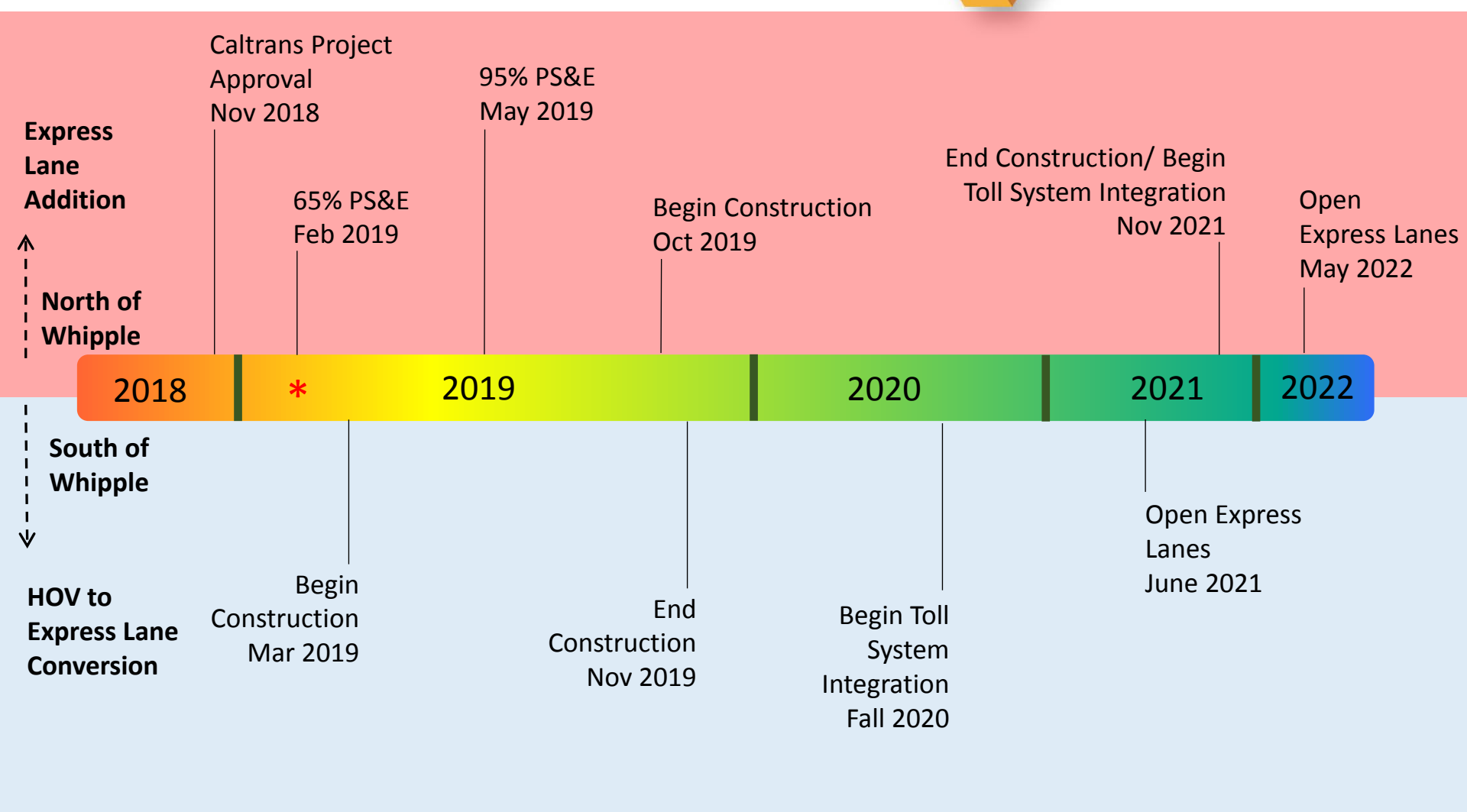
Connect to existing PG&E and telecommunications junctions on city streets

Impacts: Nighttime lane closures, temporary ramp closures, temporary city street closures

San Mateo – Narrowing of Bayshore Blvd, Changes to on-street parking at Dore Ave

San Mateo – Sound wall reconstruction, no reconstruction of Monte Diablo Pedestrian Overcrossing

SM 101 EXPRESS LANES PROJECT Schedule Update



SM 101 EXPRESS LANES PROJECT Construction Activities



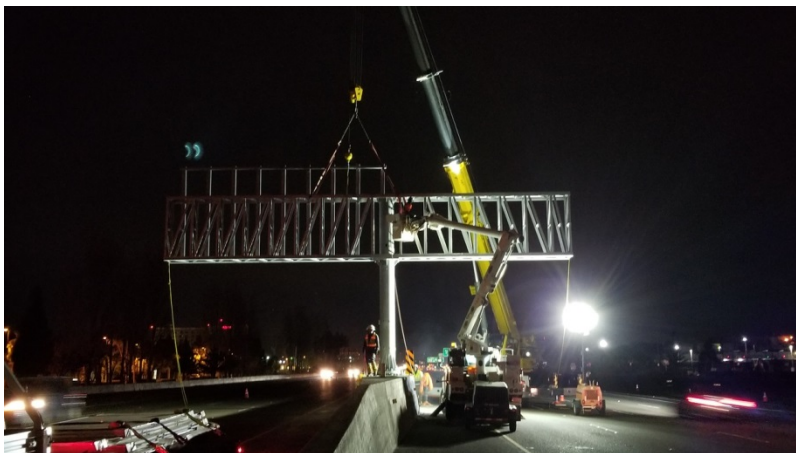
Median Barrier Replacement



SM 101 EXPRESS LANES PROJECT Construction Activities



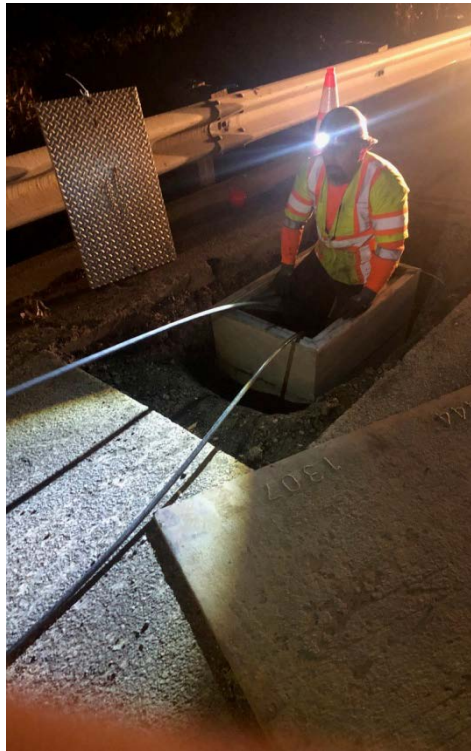
Overhead Sign Construction



SM 101 EXPRESS LANES PROJECT Construction Activities



PG&E & Telecommunication Connections



SM 101 EXPRESS LANES PROJECT

Change Management Controls



Contract Change Order (CCO)

- A modification, deletion or addition of work to a project, which differs from the original project scope or prior agreed upon changes.

Purpose of the Change Management Board

- Establish formal process for the construction management team to control, monitor and document CCOs

SM 101 EXPRESS LANES PROJECT

Change Management Controls



Proposed Change Management Board Membership

- Steve Whipple, Caltrans Design Management Team member
- Joe Hurley, San Mateo County Transportation Authority
- Jean Higaki, City and County Association of Governments of San Mateo
- Nidal Tuqan, Caltrans Project Manager*
- Leo Scott, TA Project Manager*
- Jonathan Ng, Construction Manager*

*may be advisory only (non-voting member)

SM 101 EXPRESS LANES PROJECT

Change Management Controls



What issues will come before and acted upon by the Change Management Board?

COST

Any contract change order that would increase the cost of the contract by more than \$200,000.

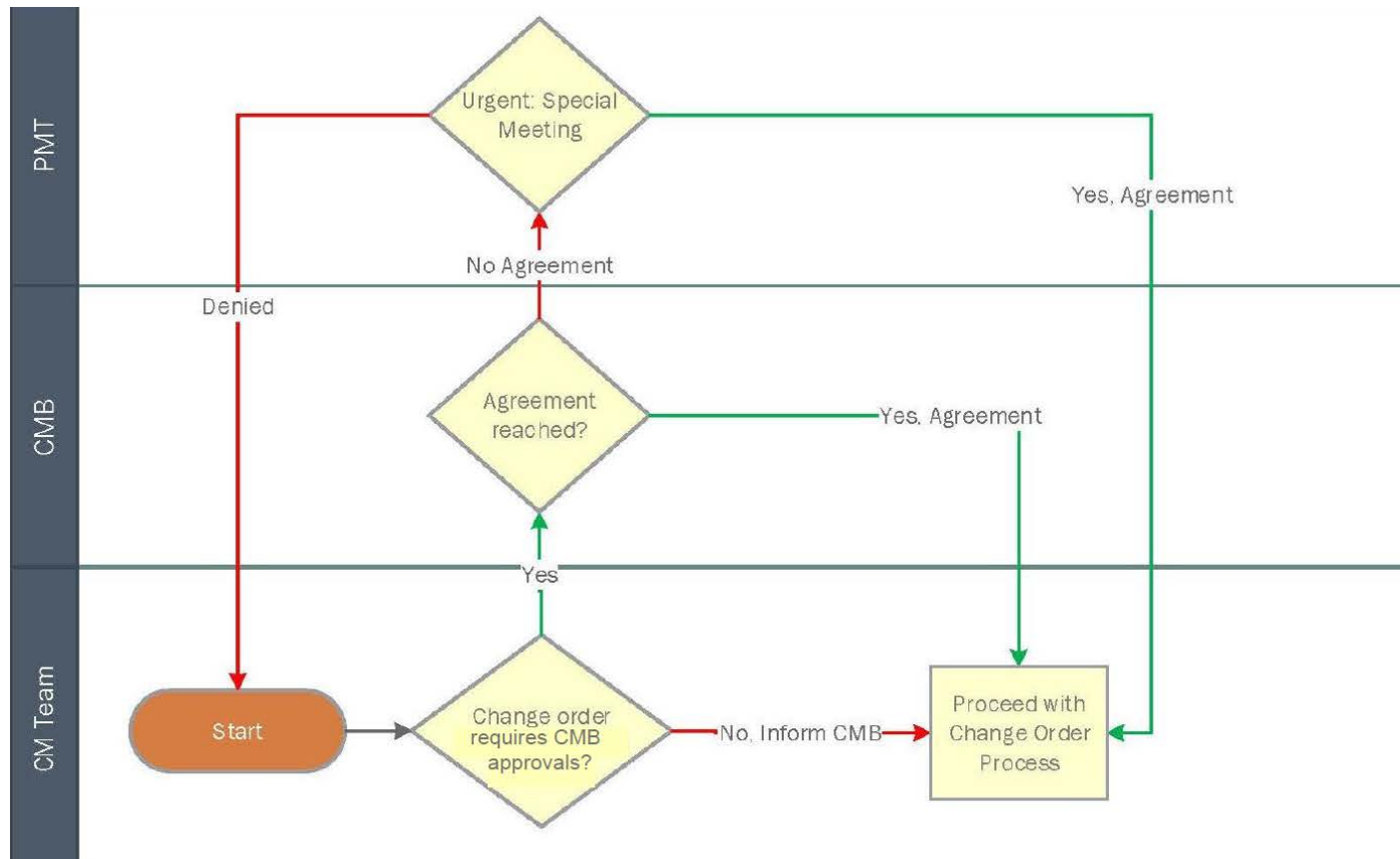
SCHEDULE

Any change that results in a contract time extension of 20 or more working days. Additionally, if time is extended by more than 20 percent of the original contract working days, then that change and each subsequent contract change order to extend time.

ELEVATION PROCESS

Any CCO that does not achieve resolution within 10 days will be elevated to the Project Management Team (April Chan, Sandy Wong and Doanh Nguyen) if still not resolved in 10 days it is elevated to the Executives (Jim Hartnett, Sandy Wong and Tony Tavares)

Change Management Board (CMB) Procedure

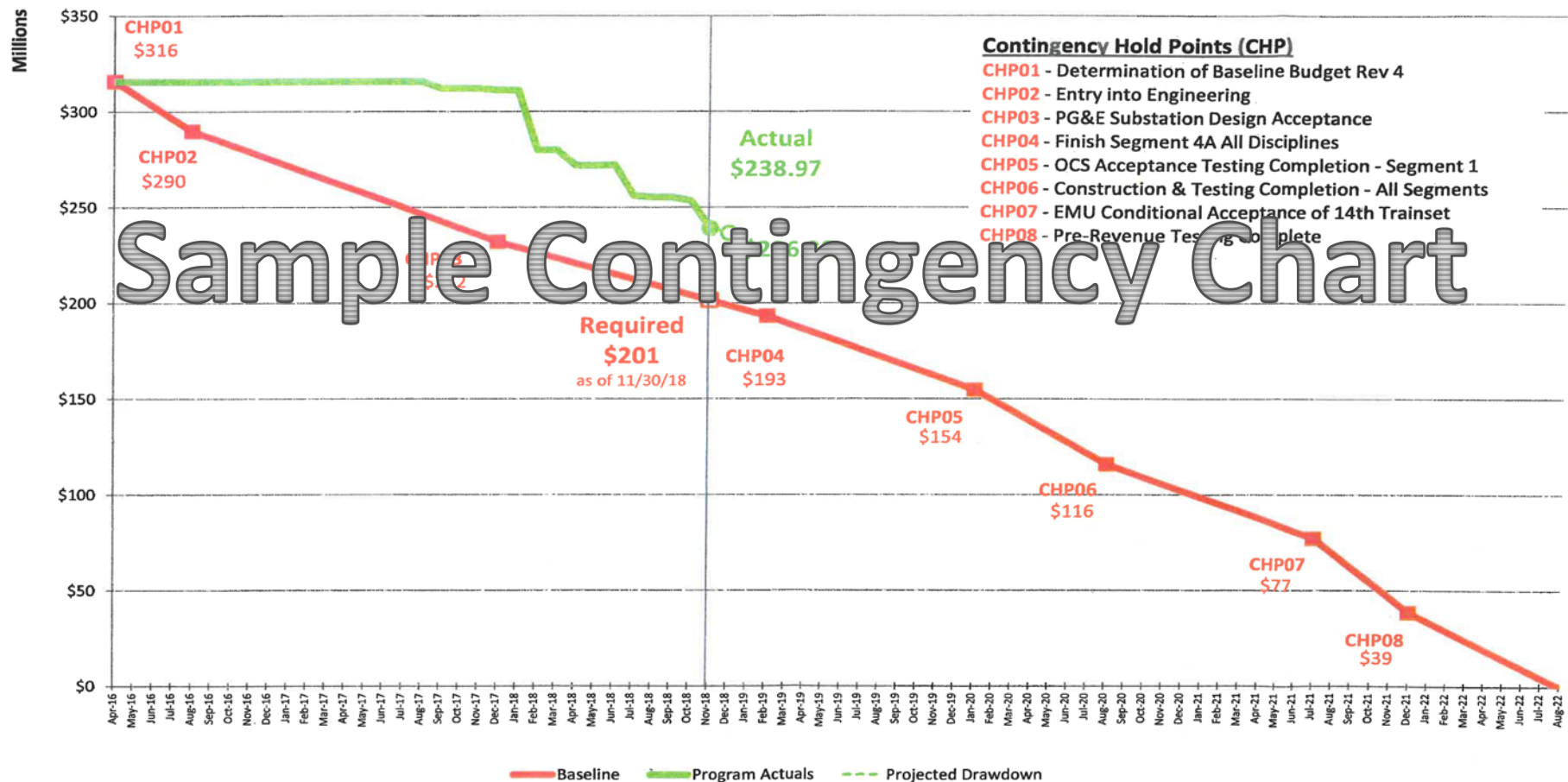


SM 101 EXPRESS LANES PROJECT

Change Management Controls



Contingency Monitoring



SM 101 EXPRESS LANES PROJECT

Public Outreach



- Public Outreach
 - Groundbreaking March 8th 10am
 - Construction Activities and Schedule
 - Express Lanes Usage Education

SM 101 EXPRESS LANES PROJECT

Groundbreaking



- Caltrans, SMCTA, C/CAG and VTA are hosting a groundbreaking event to mark the start of construction for the SM 101 Express Lanes Project as well as the construction of the VTA 101 Express Lanes Project
- Planning Lead - Caltrans District 4 Public Affairs Office
- Planning Participants – Tasha Bartholomew (SMCTA); Jean Higaki (C/CAG), VTA and Caltrans representatives
- Date – March 8th @ 10:00 AM, Caltrans 101/92 Park & Ride Lot
- Invited – State, Federal and local elected officials, agency, city and private partners, project team

SM 101 EXPRESS LANES PROJECT Construction Communications



- Construction Communications:
 - Noticeable impacts will be communicated by Caltrans directly to the public via social media (lane and ramp closures, detours, etc.)
 - Temporary city street detours will be communicated by Caltrans to the public and City staff
 - Cities/Counties/Stakeholders/Private Sector Groups will receive electronic project updates quarterly

SM 101 EXPRESS LANES PROJECT PUBLIC OUTREACH



Plan Notifications

Fact Sheet and FAQs

Ongoing updates on the Caltrans project website

City PIOs will be updated via email quarterly during construction

Stakeholders and anyone who signed up for updates will also be updated via email quarterly during construction

A new website will be developed to communicate express lanes operations

SM 101 EXPRESS LANES PROJECT CONSTRUCTION NOTIFICATIONS

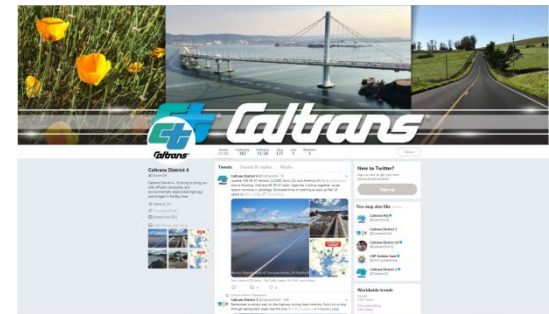


Lane Closure on US 101

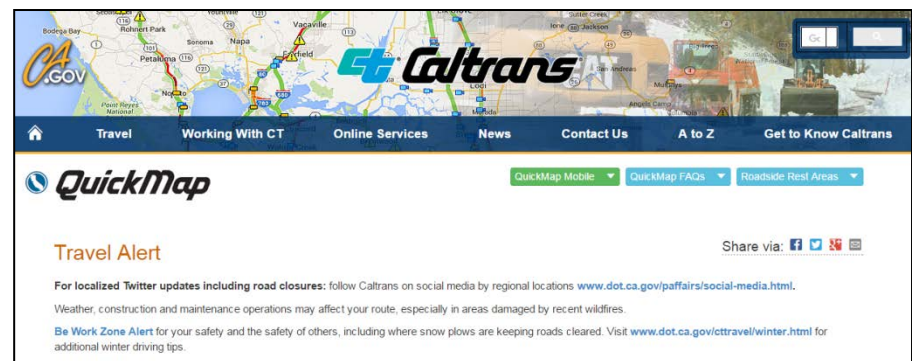
Caltrans notifies the public
about freeway lane
closures via Twitter
@CaltransD4



Twitter



Lane closures, ramp
closures & other
highway information is
available at Caltrans
QuickMap, to be linked
from the project
website



SM 101 EXPRESS LANES PROJECT CONSTRUCTION NOTIFICATIONS



Temporary Local Street Closures

Caltrans social media



Caltrans project website



Notifications Sent to City
Public Information Officers
(PIOs)

Street
Closure
Notice

 Nextdoor

SM 101 EXPRESS LANES PROJECT

Express Lanes Education



- SMCTA will host a website focused on educating the public on:
 - What are express lanes
 - How will the express lanes operate
 - How does dynamic tolling work
 - Who decides the policies for the lanes
- Linked to Caltrans project website, VTA express lanes, MTC, FasTrak, and others
- Largely featuring existing materials and videos that will be created by Caltrans for the project