


SAN MATEO COUNTY
**Transportation
Authority**

Measure A Local Shuttle Program Status


January 8, 2015
Board of Directors
Agenda Item 13a

The slide features a green background with a faint aerial view of a highway interchange and a train on tracks. The TA logo is in the top left corner, and the title and date information are centered and right-aligned respectively.



Overview

- **New Measure A Local Shuttle Program**
- **Program Performance for FY2014**
- **Next Steps**



2

The slide has a white background with a green border on the left and bottom. The TA logo is in the top left. The title 'Overview' is in bold black text. Below it is a bulleted list of three items in bold green text. At the bottom right is a photograph of a white shuttle bus with 'Caltrans Shuttle' branding, with several people boarding. A small number '2' is in the bottom right corner of the slide area.



New Measure A Local Shuttle Program

- **Shuttles: 4% of Measure A Program**
- **Provides matching funds for operation of local shuttle service**
- **Minimum 25% match required**

3



Measure A Allocations to date

Fiscal Year	Allocation
2011	\$1,342,000
2012	\$1,430,000
2013	\$2,178,000
2014	\$2,542,000
2015	\$2,827,000
2016	\$2,884,000
Total	\$13,203,000

4



Funding Sources

30 Shuttles were Allocated Measure A Funds for Shuttle Operations in FY2013 & 2014

- \$9.4 million total Operating Cost
- \$4.7 million Measure A funds (50%)
- \$4.7 million in matching funds (50%)

5



Types of Shuttles

- 23 Commuter Shuttles
- 5 Community Shuttles
- 2 Combination Commuter/Community Shuttle

6



Measure A Funded Shuttles



7




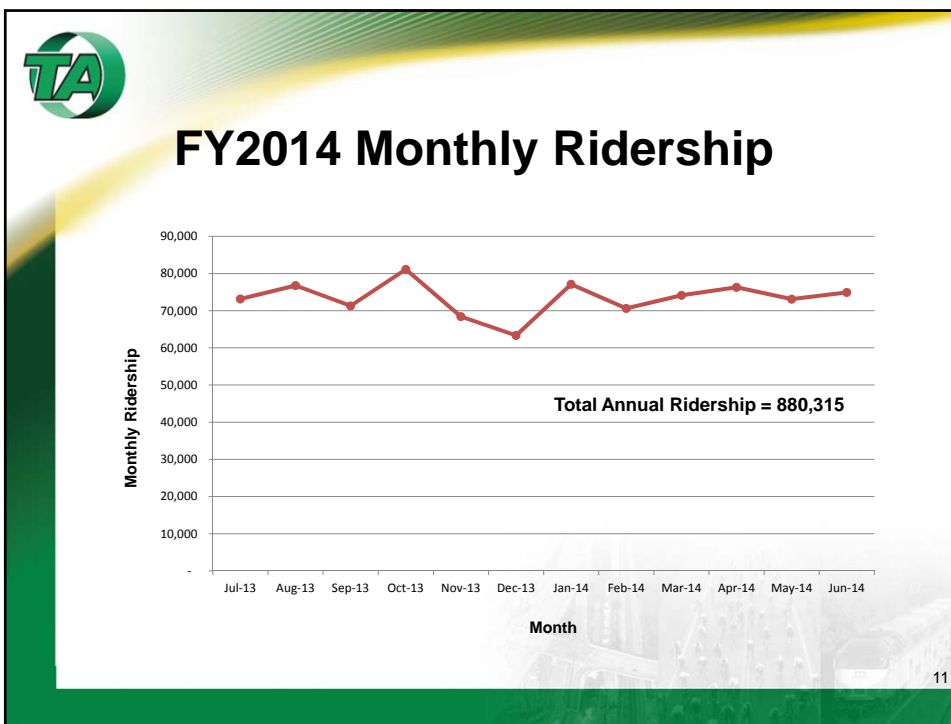
Measure A Funded Commuter Shuttles



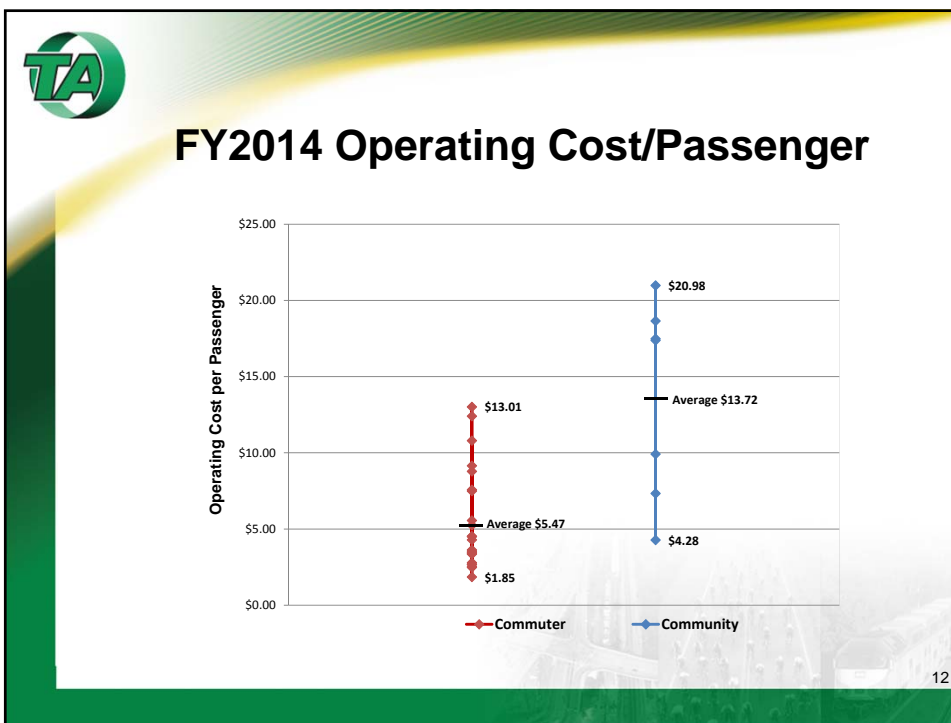
8



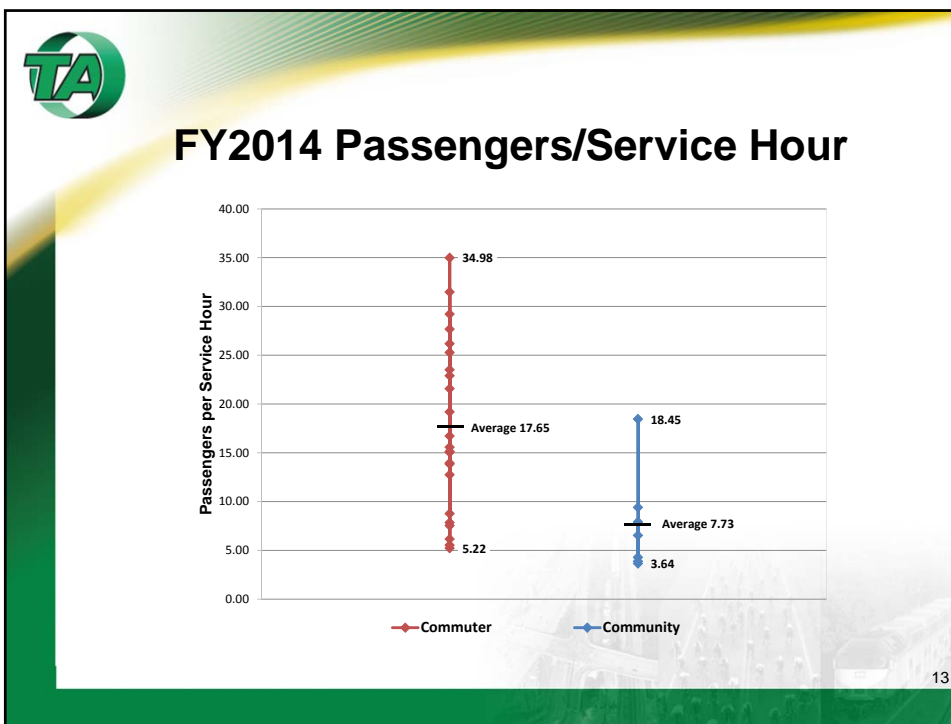
- 
- ## FY2014 Performance
- **30 Different Operating Shuttles**
 - **Sponsor Progress Reports**
 - Ridership
 - Total Operating Cost
 - Total Service Hours
 - **Program Performance Metrics**
 - Ridership
 - Cost/passenger
 - Passengers/service hour
- 10



11



12



-
- ### Next Steps
- TA participates in SamTrans Mobility Plan**
- Determine entities best able to manage shuttle programs
 - Guidance for updating performance benchmarks
 - Better definition of “service duplication”
- 14