



SAN MATEO COUNTY

**Transportation
Authority**

Measure A Local Shuttle Program Status

December 7, 2017
Board of Directors
Agenda Item #11a



Overview

- **Measure A Local Shuttle Program**
- **Allocations**
- **Shuttle Purpose and Type**
- **FY2017 Program Performance**





New Measure A Local Shuttle Program

- **Shuttles: 4% of Measure A Program**
- **Provides matching funds for operation of local shuttle service**





New Measure A Allocations

Call for Projects (CFP) Funding Cycle	Allocations
First CFP (FY2011 & FY2012)	\$2.75 mil.
2nd CFP (FY2013 & FY2014)	\$4.72 mil.
3rd CFP (FY2015 & FY2016)	\$5.81 mil.
4th CFP (FY2017 & FY2018)	\$8.14 mil.
Allocations not part of a CFP process*	\$2.38 mil.
Total	\$23.79 mil.

* Includes direct allocations made for the Caltrain Shuttle Program in FY 2010, the Menlo Park Shuttle Program in FY2011 & FY2012, the C/CAG Shuttle Program in FY 2010-FY2012 & for program planning support of shuttle operations



Funding Sources

- **Projected costs for operation of 37 allocated shuttles in FY2017 & FY2018**
 - \$ 8.1 mil. Measure A funds (61%)
 - \$ 5.2 mil. matching funds (39%)
 - \$13.3 mil. projected total cost
- **Actual expenses for operation of 36 shuttles in FY2017**
 - \$ 3.3 mil. Measure A funds (54%)
 - \$ 2.9 mil. in matching funds (46%)
 - \$ 6.2 mil. actual total expenses



Shuttle Purpose & Type



- **Purpose:** Fill gaps in regular bus service (route & time)
- **Commuter shuttles:** provide first/last mile peak commute link to/from regional transit primarily to access employment centers
- **Community shuttles:** provide all, mid-day or weekend service generally within a community for basic needs (e.g. shopping, dining, medical), often serving the transit-dependent
 - **Door to door shuttles:** special type of community shuttle providing direct point to point service by advance reservation not on a regular scheduled route



Shuttles by Type

Measure A allocated shuttles for FY2017 & FY2018

Shuttles	Type
29	Commuter
7	Community serving*
1	Door to door
37	

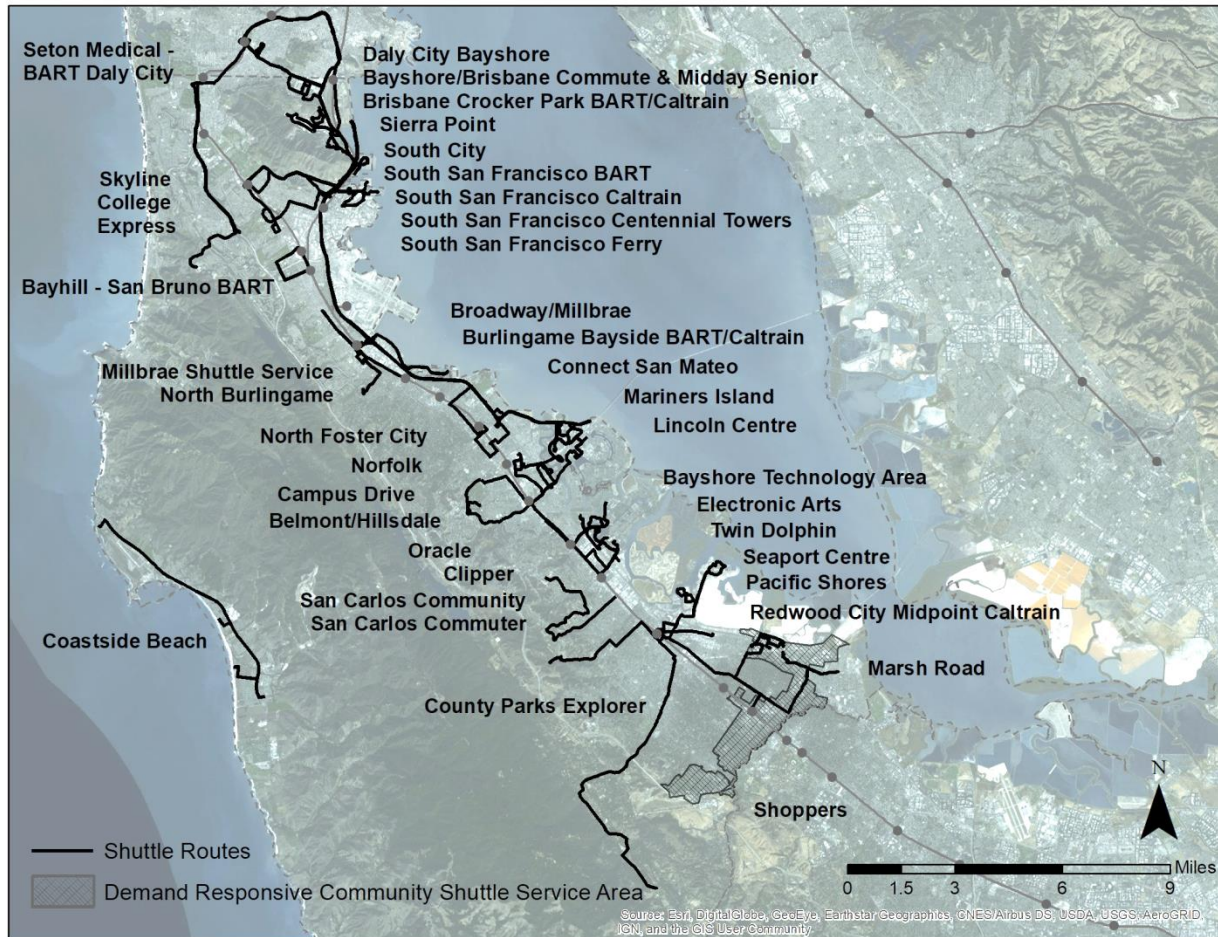
* Two community serving shuttles function as both commuter and community serving

Shuttles	Type
31	Existing
6	New
	- Coastside Beach Shuttle
	- Connect San Mateo*
	- County Parks Explorer
	- San Carlos Community
	- San Carlos Commuter
	- Skyline College Express
37	

* Connect San Mateo initiated service in FY2018

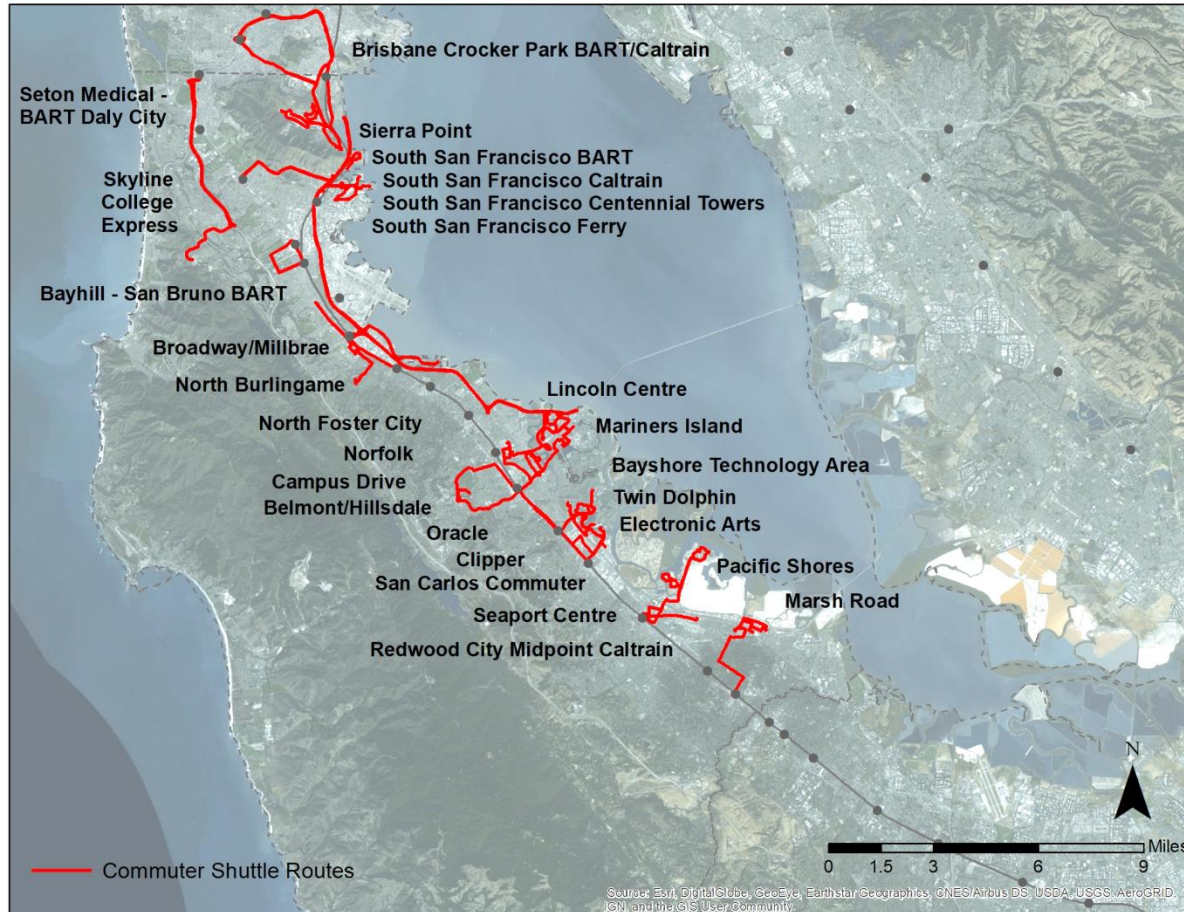


Measure A Funded Shuttles for FY 2017 & FY2018



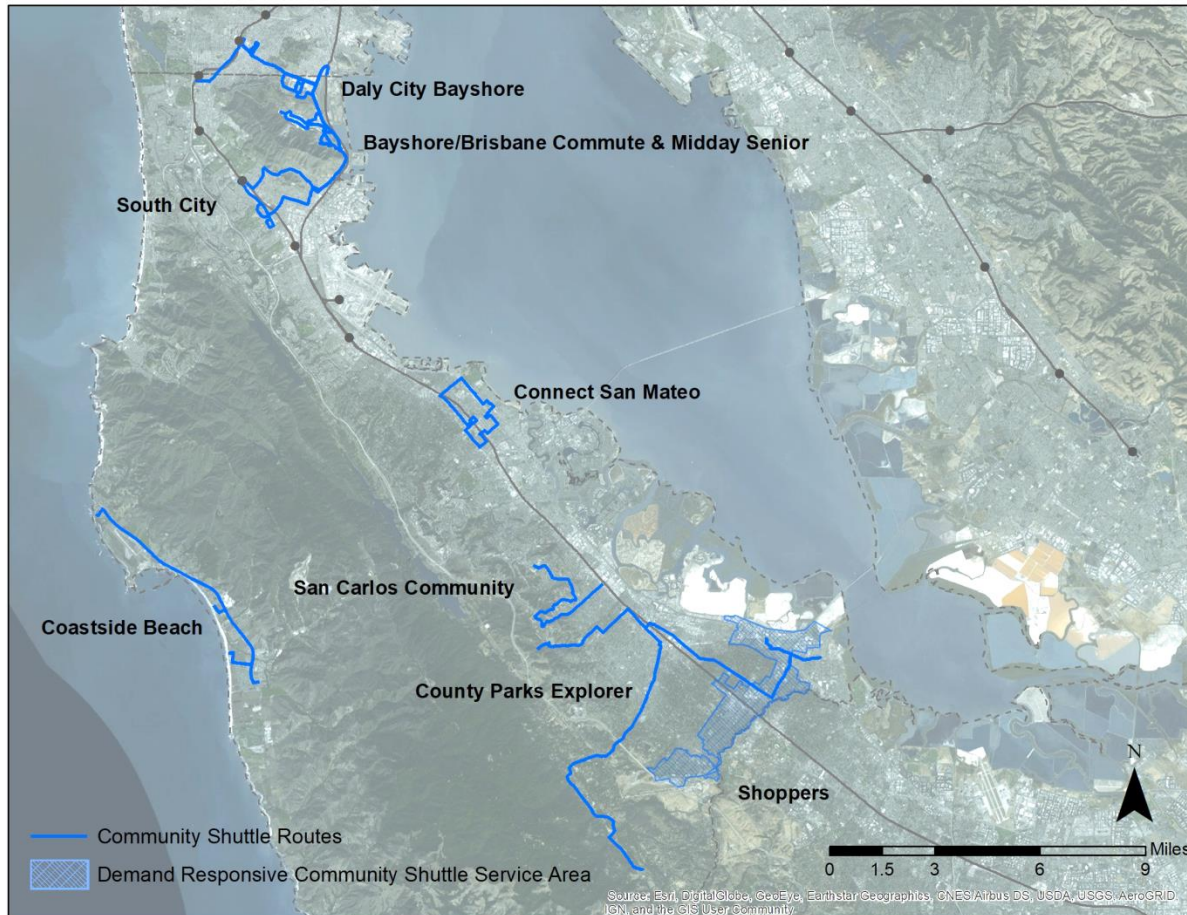


Existing Measure A Funded Commuter Shuttles





Existing Measure A Funded Community Serving Shuttles



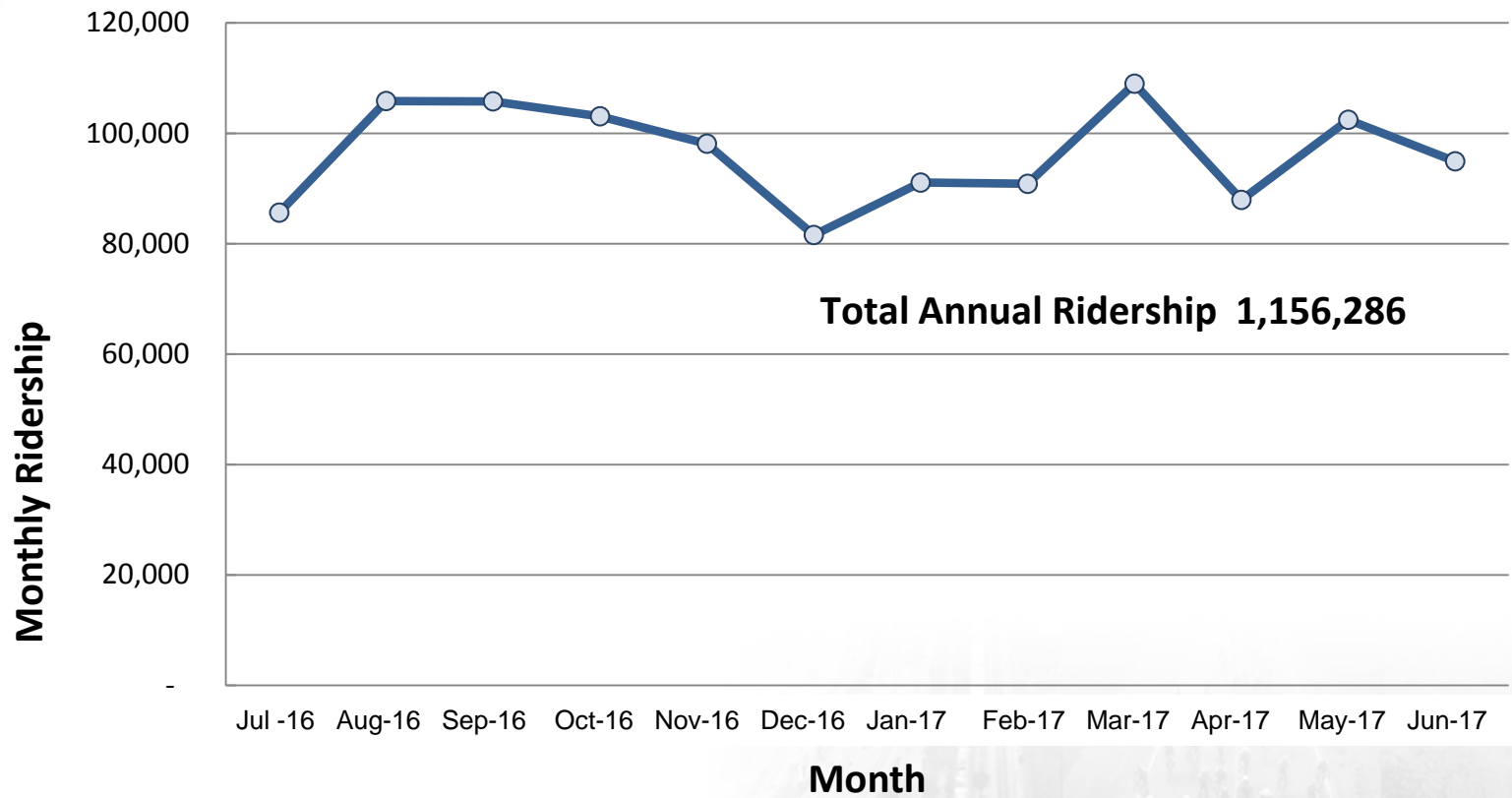


FY2017 Performance

- **Sponsor progress reports**
 - Ridership
 - Total operating cost
 - Total service hours
- **Program performance**
 - Ridership
 - Cost/passenger
 - Passengers/service hour

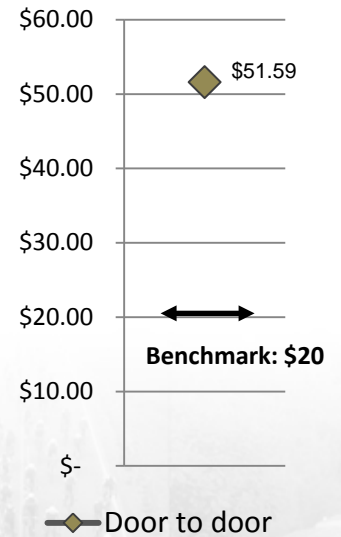
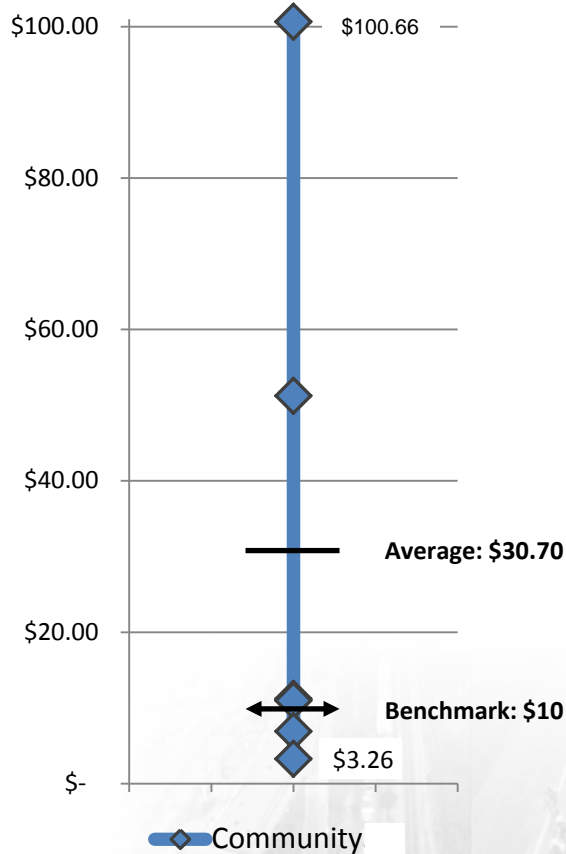
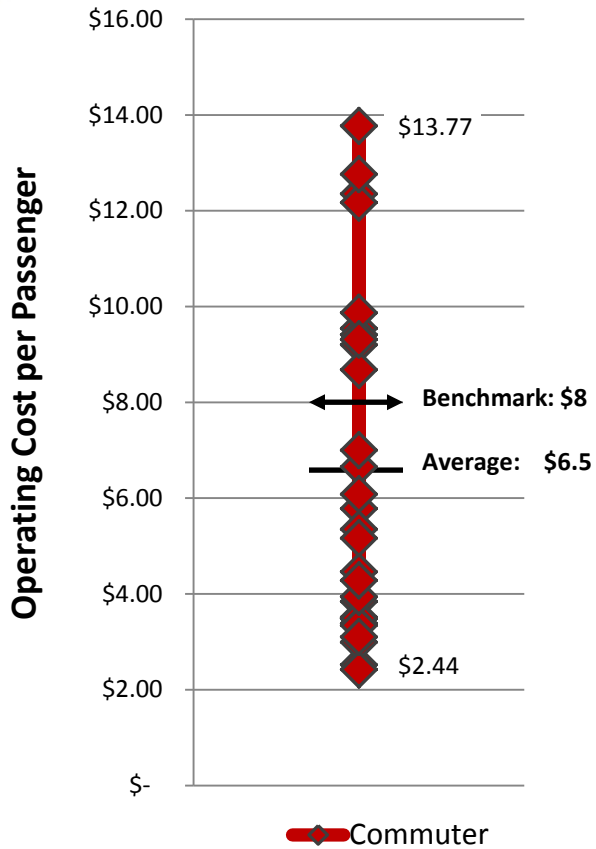


FY2017 Monthly Ridership



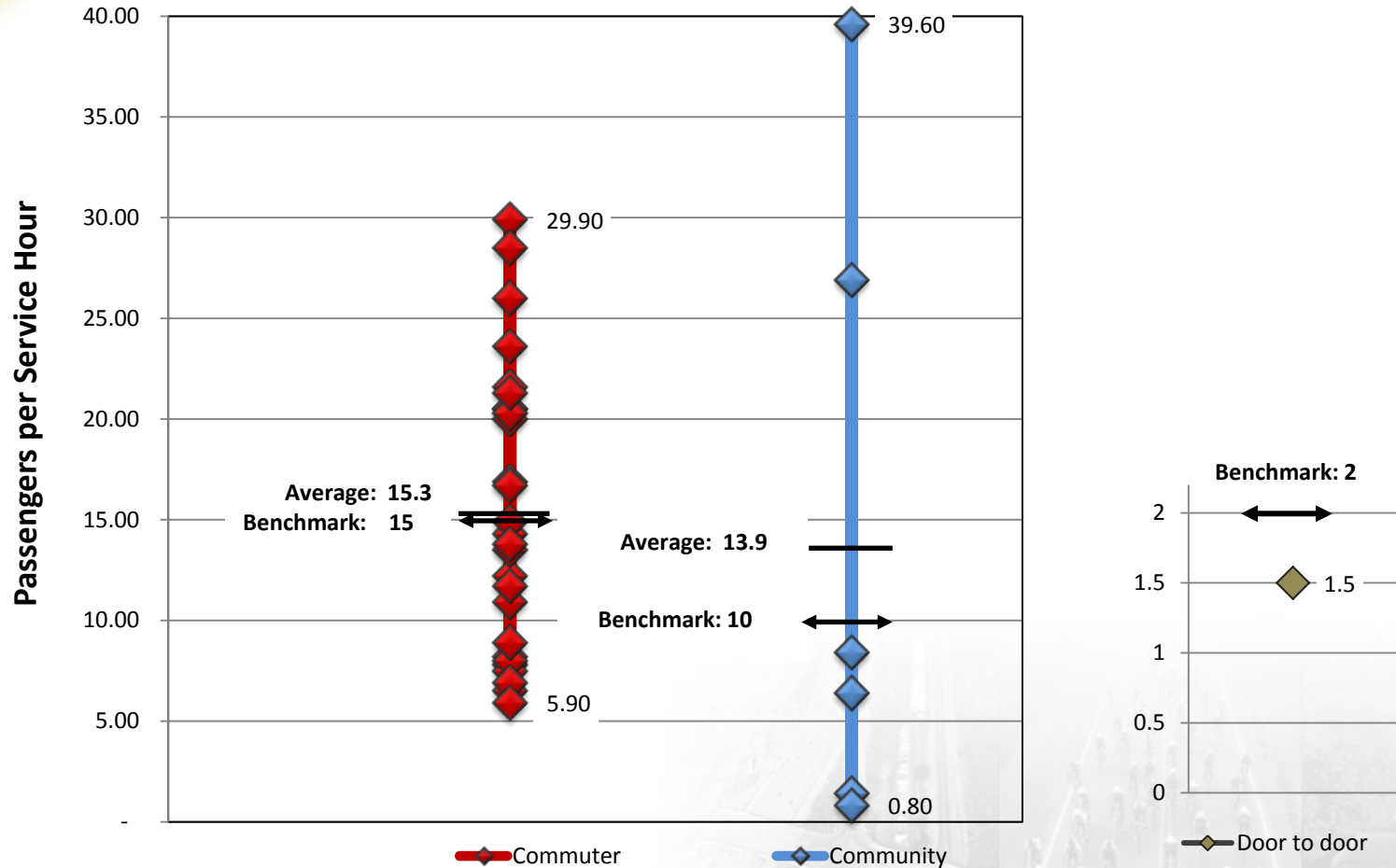


FY2017 Operating Cost/Passenger





FY2017 Passengers/Service Hour





Related Activities

- **Ongoing sponsor Shuttle Technical Assistance Program kicked off with September 2017 workshop**
- **Technical assistance offered to all sponsors, required for new shuttles and existing shuttles not meeting benchmarks to improve performance**
- **Next joint TA-C/CAG Call for Projects planned for release this month**